

Datasheet for ABIN7306498

anti-ETV7 antibody**2** Images[Go to Product page](#)

Overview

Quantity:	100 µL
Target:	ETV7
Reactivity:	Human, Mouse
Host:	Rabbit
Clonality:	Polyclonal
Conjugate:	This ETV7 antibody is un-conjugated
Application:	Western Blotting (WB), Immunohistochemistry (IHC)

Product Details

Immunogen:	Recombinant full length protein of human TEL2
Specificity:	Recognizes endogenous levels of TEL2 protein.
Characteristics:	Rabbit polyclonal antibody to TEL2
Purification:	The antibody was purified by immunogen affinity chromatography.

Target Details

Target:	ETV7
Alternative Name:	TEL2 (ETV7 Products)
Background:	TEL2, TELB, TREF, Transcription factor ETV7, ETS translocation variant 7, ETS-related protein Tel2, Tel-related Ets factor, Transcription factor Tel-2
Gene ID:	51513

Target Details

UniProt: [Q9Y603](#)

Application Details

Application Notes: WB (1:500 - 1:2000), IH (1:50 - 1:200)

Restrictions: For Research Use only

Handling

Format: Liquid

Buffer: Liquid in 0.42 % Potassium phosphate, 0.87 % Sodium chloride, pH 7.3, 30 % glycerol, and 0.01 % sodium azide.

Preservative: Sodium azide

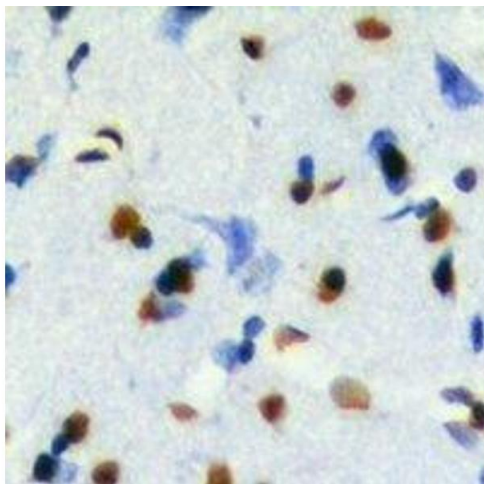
Precaution of Use: This product contains Sodium azide: a POISONOUS AND HAZARDOUS SUBSTANCE which should be handled by trained staff only.

Storage: -20 °C

Storage Comment: Shipped at 4°C. Upon delivery aliquot and store at -20°C for one year. Avoid freeze/thaw cycles.

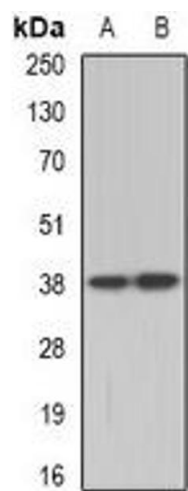
Expiry Date: 12 months

Images



Immunohistochemistry

Image 1. Immunohistochemical analysis of TEL2 staining in mouse brain formalin fixed paraffin embedded tissue section. The section was pre-treated using heat mediated antigen retrieval with sodium citrate buffer (pH 6.0). The section was then incubated with the an



Western Blotting

Image 2. Western blot analysis of TEL2 expression in A431 (A), Hela (B) whole cell lysates.