

Datasheet for ABIN7306502
anti-SERPINB1 antibody



[Go to Product page](#)

2 Images

Overview

Quantity:	100 µL
Target:	SERPINB1
Reactivity:	Human, Mouse, Rat
Host:	Rabbit
Clonality:	Polyclonal
Conjugate:	This SERPINB1 antibody is un-conjugated
Application:	Western Blotting (WB), Immunofluorescence (IF), Immunochromatography (IC)

Product Details

Immunogen:	Recombinant full length protein of human SerpinB1
Specificity:	Recognizes endogenous levels of SerpinB1 protein.
Characteristics:	Rabbit polyclonal antibody to SerpinB1
Purification:	The antibody was purified by immunogen affinity chromatography.

Target Details

Target:	SERPINB1
Alternative Name:	SerpinB1 (SERPINB1 Products)
Background:	ELANH2, MNEI, PI2, Leukocyte elastase inhibitor, LEI, Monocyte/neutrophil elastase inhibitor, EI, M/NEI, Peptidase inhibitor 2, PI-2, Serpin B1
Gene ID:	1992

Target Details

UniProt: [P30740](#)

Application Details

Application Notes: WB (1:500 - 1:2000), IF/IC (1:20 - 1:100)

Restrictions: For Research Use only

Handling

Format: Liquid

Buffer: Liquid in 0.42 % Potassium phosphate, 0.87 % Sodium chloride, pH 7.3, 30 % glycerol, and 0.01 % sodium azide.

Preservative: Sodium azide

Precaution of Use: This product contains Sodium azide: a POISONOUS AND HAZARDOUS SUBSTANCE which should be handled by trained staff only.

Storage: -20 °C

Storage Comment: Shipped at 4°C. Upon delivery aliquot and store at -20°C for one year. Avoid freeze/thaw cycles.

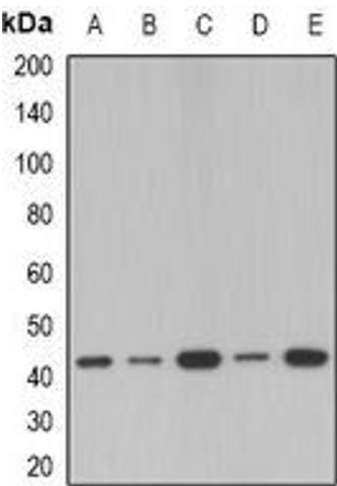
Expiry Date: 12 months

Images



Immunofluorescence

Image 1. Immunofluorescent analysis of SerpinB1 staining in HeLa cells. Formalin-fixed cells were permeabilized with 0.1% Triton X-100 in TBS for 5-10 minutes and blocked with 3% BSA-PBS for 30 minutes at room temperature. Cells were probed with the primary antibo



Western Blotting

Image 2. Western blot analysis of SerpinB1 expression in MCF7 (A), A549 (B), mouse lung (C), mouse spleen (D), rat spleen (E) whole cell lysates.