



[Go to Product page](#)

Datasheet for ABIN7306520

## anti-Phosphoglucomutase 1 antibody

### 2 Images

#### Overview

Quantity:	100 µL
Target:	Phosphoglucomutase 1 (PGM1)
Reactivity:	Human, Mouse, Rat
Host:	Rabbit
Clonality:	Polyclonal
Conjugate:	This Phosphoglucomutase 1 antibody is un-conjugated
Application:	Western Blotting (WB), Immunofluorescence (IF), Immunochromatography (IC)

#### Product Details

Immunogen:	Recombinant full length protein of human PGM1
Specificity:	Recognizes endogenous levels of PGM1 protein.
Characteristics:	Rabbit polyclonal antibody to PGM1
Purification:	The antibody was purified by immunogen affinity chromatography.

#### Target Details

Target:	Phosphoglucomutase 1 (PGM1)
Alternative Name:	PGM1 ( <a href="#">PGM1 Products</a> )
Background:	Phosphoglucomutase-1, PGM 1, Glucose phosphomutase 1
Gene ID:	5236, 72157
UniProt:	<a href="#">P36871</a> , <a href="#">Q9D0F9</a> , <a href="#">P38652</a>

## Target Details

---

Pathways: [Cellular Glucan Metabolic Process](#)

## Application Details

---

Application Notes: WB (1:500 - 1:2000), IF/IC (1:10 - 1:100)

Restrictions: For Research Use only

## Handling

---

Format: Liquid

Buffer: Liquid in 0.42 % Potassium phosphate, 0.87 % Sodium chloride, pH 7.3, 30 % glycerol, and 0.01 % sodium azide.

Preservative: Sodium azide

Precaution of Use: This product contains Sodium azide: a POISONOUS AND HAZARDOUS SUBSTANCE which should be handled by trained staff only.

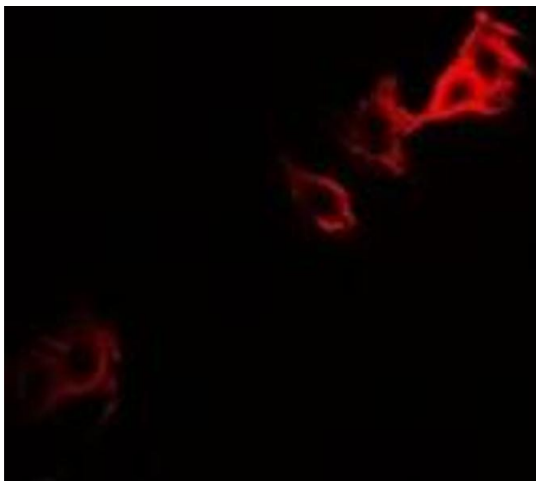
Storage: -20 °C

Storage Comment: Shipped at 4°C. Upon delivery aliquot and store at -20°C for one year. Avoid freeze/thaw cycles.

Expiry Date: 12 months

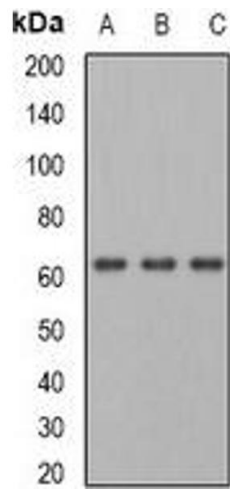
## Images

---



### Immunofluorescence

**Image 1.** Immunofluorescent analysis of PGM1 staining in U2OS cells. Formalin-fixed cells were permeabilized with 0.1% Triton X-100 in TBS for 5-10 minutes and blocked with 3% BSA-PBS for 30 minutes at room temperature. Cells were probed with the primary antibody i



### Western Blotting

**Image 2.** Western blot analysis of PGM1 expression in HepG2 (A), mouse heart (B), rat liver (C) whole cell lysates.