



[Go to Product page](#)

Datasheet for ABIN7306564
anti-SLC7A1 antibody

2 Images

Overview

Quantity:	100 µL
Target:	SLC7A1
Reactivity:	Human, Mouse
Host:	Rabbit
Clonality:	Polyclonal
Conjugate:	This SLC7A1 antibody is un-conjugated
Application:	Western Blotting (WB), Immunofluorescence (IF), Immunochromatography (IC)

Product Details

Immunogen:	Recombinant full length protein of human CAT1
Specificity:	Recognizes endogenous levels of CAT1 protein.
Characteristics:	Rabbit polyclonal antibody to CAT1
Purification:	The antibody was purified by immunogen affinity chromatography.

Target Details

Target:	SLC7A1
Alternative Name:	CAT1 (SLC7A1 Products)
Background:	CAT1, Carnitine O-acetyltransferase, Carnitine acetylase, Carnitine acetyltransferase, CAT, CrAT
Gene ID:	1384, 12908
UniProt:	P43155 , P47934

Target Details

Pathways: [Dicarboxylic Acid Transport](#)

Application Details

Application Notes: WB (1:500 - 1:2000), IF/IC (1:50 - 1:100)

Restrictions: For Research Use only

Handling

Format: Liquid

Buffer: Liquid in 0.42 % Potassium phosphate, 0.87 % Sodium chloride, pH 7.3, 30 % glycerol, and 0.01 % sodium azide.

Preservative: Sodium azide

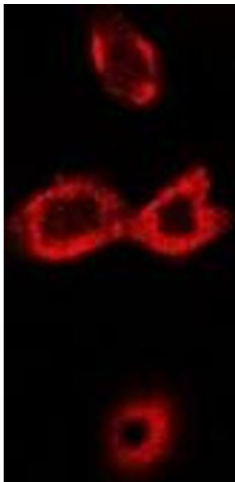
Precaution of Use: This product contains Sodium azide: a POISONOUS AND HAZARDOUS SUBSTANCE which should be handled by trained staff only.

Storage: -20 °C

Storage Comment: Shipped at 4°C. Upon delivery aliquot and store at -20°C for one year. Avoid freeze/thaw cycles.

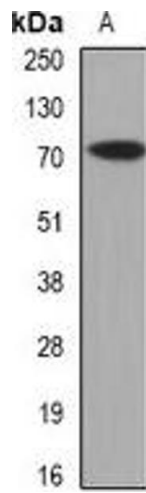
Expiry Date: 12 months

Images



Immunofluorescence

Image 1. Immunofluorescent analysis of CAT1 staining in HeLa cells. Formalin-fixed cells were permeabilized with 0.1% Triton X-100 in TBS for 5-10 minutes and blocked with 3% BSA-PBS for 30 minutes at room temperature. Cells were probed with the primary antibody i



Western Blotting

Image 2. Western blot analysis of CAT1 expression in mouse skeletal muscle (A) whole cell lysates.