



[Go to Product page](#)

Datasheet for ABIN7306588

## anti-PCBD1 antibody

### 2 Images

#### Overview

Quantity:	100 µL
Target:	PCBD1
Reactivity:	Human, Mouse, Rat
Host:	Rabbit
Clonality:	Polyclonal
Conjugate:	This PCBD1 antibody is un-conjugated
Application:	Western Blotting (WB), Immunofluorescence (IF), Immunochromatography (IC)

#### Product Details

Immunogen:	Recombinant full length protein of human PCBD1
Specificity:	Recognizes endogenous levels of PCBD1 protein.
Characteristics:	Rabbit polyclonal antibody to PCBD1
Purification:	The antibody was purified by immunogen affinity chromatography.

#### Target Details

Target:	PCBD1
Alternative Name:	PCBD1 ( <a href="#">PCBD1 Products</a> )
Background:	DCOH, PCBD, Pterin-4-alpha-carbinolamine dehydratase, PHS, 4-alpha-hydroxy-tetrahydropterin dehydratase, Dimerization cofactor of hepatocyte nuclear factor 1-alpha, DCoH, Dimerization cofactor of HNF1, Phenylalanine hydroxylase-stimulating protein, Pterin carbinolamine dehydratase, PCD

## Target Details

Gene ID: 5092, 13180, 29700

UniProt: [P61457](#), [P61458](#), [P61459](#)

## Application Details

Application Notes: WB (1:500 - 1:2000), IF/IC (1:10 - 1:100)

Restrictions: For Research Use only

## Handling

Format: Liquid

Buffer: Liquid in 0.42 % Potassium phosphate, 0.87 % Sodium chloride, pH 7.3, 30 % glycerol, and 0.01 % sodium azide.

Preservative: Sodium azide

Precaution of Use: This product contains Sodium azide: a POISONOUS AND HAZARDOUS SUBSTANCE which should be handled by trained staff only.

Storage: -20 °C

Storage Comment: Shipped at 4°C. Upon delivery aliquot and store at -20°C for one year. Avoid freeze/thaw cycles.

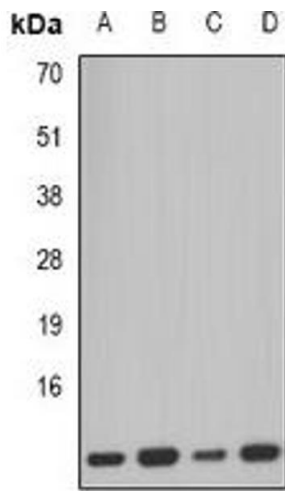
Expiry Date: 12 months

## Images



### Immunofluorescence

**Image 1.** Immunofluorescent analysis of PCBD1 staining in U2OS cells. Formalin-fixed cells were permeabilized with 0.1% Triton X-100 in TBS for 5-10 minutes and blocked with 3% BSA-PBS for 30 minutes at room temperature. Cells were probed with the primary antibody



### Western Blotting

**Image 2.** Western blot analysis of PCBD1 expression in SW620 (A), mouse kidney (B), mouse pancreas (C), rat liver (D) whole cell lysates.