

Datasheet for ABIN7306594
anti-Kallikrein 10 antibody

3 Images

[Go to Product page](#)

Overview

| | |
|--------------|--|
| Quantity: | 100 µL |
| Target: | Kallikrein 10 (KLK10) |
| Reactivity: | Human |
| Host: | Rabbit |
| Clonality: | Polyclonal |
| Conjugate: | This Kallikrein 10 antibody is un-conjugated |
| Application: | Western Blotting (WB), Immunohistochemistry (IHC), Immunofluorescence (IF), Immunochromatography (IC) |

Product Details

| | |
|------------------|---|
| Immunogen: | Recombinant full length protein of human KLK10 |
| Specificity: | Recognizes endogenous levels of KLK10 protein. |
| Characteristics: | Rabbit polyclonal antibody to KLK10 |
| Purification: | The antibody was purified by immunogen affinity chromatography. |

Target Details

| | |
|-------------------|--|
| Target: | Kallikrein 10 (KLK10) |
| Alternative Name: | KLK10 (KLK10 Products) |
| Background: | NES1, PRSSL1, Kallikrein-10, Normal epithelial cell-specific 1, Protease serine-like 1 |
| Gene ID: | 5655 |

Target Details

| | |
|-----------|-----------------------------------|
| UniProt: | O43240 |
| Pathways: | Complement System |

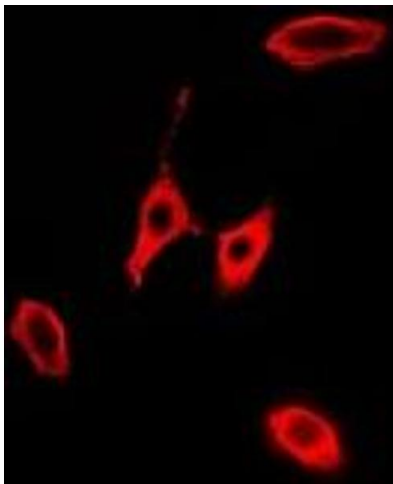
Application Details

| | |
|--------------------|--|
| Application Notes: | WB (1:500 - 1:2000), IH (1:50 - 1:200), IF/IC (1:50 - 1:100) |
| Restrictions: | For Research Use only |

Handling

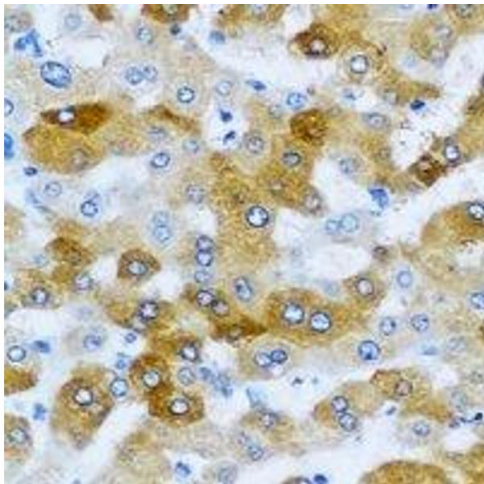
| | |
|--------------------|--|
| Format: | Liquid |
| Buffer: | Liquid in 0.42 % Potassium phosphate, 0.87 % Sodium chloride, pH 7.3, 30 % glycerol, and 0.01 % sodium azide. |
| Preservative: | Sodium azide |
| Precaution of Use: | This product contains Sodium azide: a POISONOUS AND HAZARDOUS SUBSTANCE which should be handled by trained staff only. |
| Storage: | -20 °C |
| Storage Comment: | Shipped at 4°C. Upon delivery aliquot and store at -20°C for one year. Avoid freeze/thaw cycles. |
| Expiry Date: | 12 months |

Images



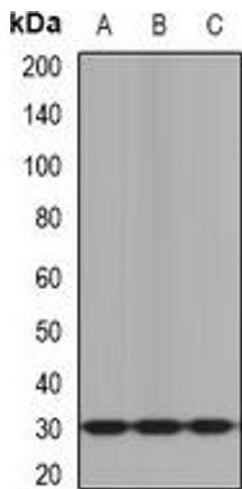
Immunofluorescence

Image 1. Immunofluorescent analysis of KLK10 staining in A549 cells. Formalin-fixed cells were permeabilized with 0.1% Triton X-100 in TBS for 5-10 minutes and blocked with 3% BSA-PBS for 30 minutes at room temperature. Cells were probed with the primary antibody



Immunohistochemistry

Image 2. Immunohistochemical analysis of KLK10 staining in human liver cancer formalin fixed paraffin embedded tissue section. The section was pre-treated using heat mediated antigen retrieval with sodium citrate buffer (pH 6.0). The section was then incubated with



Western Blotting

Image 3. Western blot analysis of KLK10 expression in mouse brain (A), mouse heart (B), rat liver (C) whole cell lysates.