

Datasheet for ABIN7306606

**anti-SSRP1 antibody****3** Images[Go to Product page](#)

## Overview

Quantity:	100 µL
Target:	SSRP1
Reactivity:	Human, Mouse, Rat
Host:	Rabbit
Clonality:	Polyclonal
Conjugate:	This SSRP1 antibody is un-conjugated
Application:	Western Blotting (WB), Immunohistochemistry (IHC), Immunofluorescence (IF), Immunochromatography (IC)

## Product Details

Immunogen:	Recombinant full length protein of human SSRP1
Specificity:	Recognizes endogenous levels of SSRP1 protein.
Characteristics:	Rabbit polyclonal antibody to SSRP1
Purification:	The antibody was purified by immunogen affinity chromatography.

## Target Details

Target:	SSRP1
Alternative Name:	SSRP1 ( <a href="#">SSRP1 Products</a> )
Background:	FACT80, FACT complex subunit SSRP1, Chromatin-specific transcription elongation factor 80 kDa subunit, Facilitates chromatin transcription complex 80 kDa subunit, FACT 80 kDa subunit, FACTp80, Facilitates chromatin transcription complex subunit SSRP1, Recombination signal

## Target Details

	sequence recognition protein 1, Structure-specific recognition protein 1, hSSRP1, T160
Gene ID:	6749, 20833, 81785
UniProt:	<a href="#">Q08945</a> , <a href="#">Q08943</a> , <a href="#">Q04931</a>
Pathways:	<a href="#">Chromatin Binding</a>

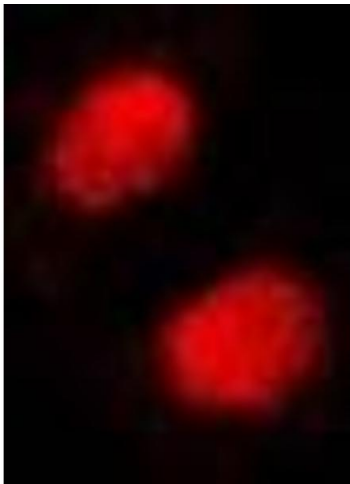
## Application Details

Application Notes:	WB (1:500 - 1:2000), IH (1:50 - 1:200), IF/IC (1:10 - 1:100)
Restrictions:	For Research Use only

## Handling

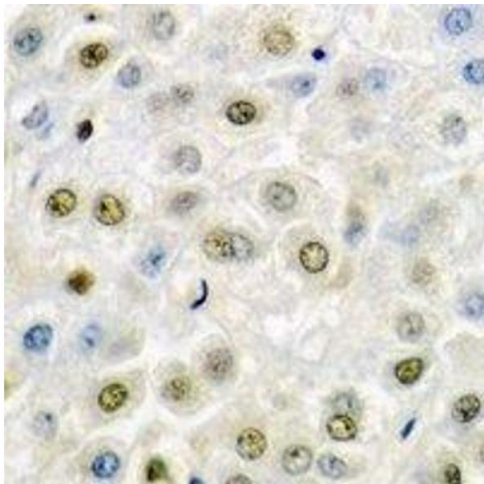
Format:	Liquid
Buffer:	Liquid in 0.42 % Potassium phosphate, 0.87 % Sodium chloride, pH 7.3, 30 % glycerol, and 0.01 % sodium azide.
Preservative:	Sodium azide
Precaution of Use:	This product contains Sodium azide: a POISONOUS AND HAZARDOUS SUBSTANCE which should be handled by trained staff only.
Storage:	-20 °C
Storage Comment:	Shipped at 4°C. Upon delivery aliquot and store at -20°C for one year. Avoid freeze/thaw cycles.
Expiry Date:	12 months

## Images



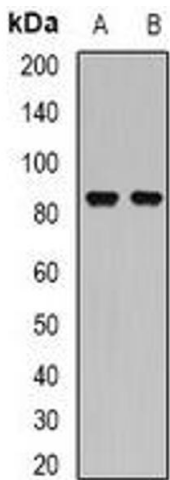
### Immunofluorescence

**Image 1.** Immunofluorescent analysis of SSRP1 staining in Hela cells. Formalin-fixed cells were permeabilized with 0.1% Triton X-100 in TBS for 5-10 minutes and blocked with 3% BSA-PBS for 30 minutes at room temperature. Cells were probed with the primary antibody



Immunohistochemistry

**Image 2.** Immunohistochemical analysis of SSRP1 staining in mouse liver formalin fixed paraffin embedded tissue section. The section was pre-treated using heat mediated antigen retrieval with sodium citrate buffer (pH 6.0). The section was then incubated with the a



Western Blotting

**Image 3.** Western blot analysis of SSRP1 expression in SW620 (A), Hela (B) whole cell lysates.