

Datasheet for ABIN7306638

anti-SEPHS1 antibody[Go to Product page](#)**2** Images

Overview

Quantity:	100 µL
Target:	SEPHS1
Reactivity:	Human, Mouse, Rat
Host:	Rabbit
Clonality:	Polyclonal
Conjugate:	This SEPHS1 antibody is un-conjugated
Application:	Western Blotting (WB), Immunofluorescence (IF), Immunochromatography (IC)

Product Details

Immunogen:	Recombinant full length protein of human SEPHS1
Specificity:	Recognizes endogenous levels of SEPHS1 protein.
Characteristics:	Rabbit polyclonal antibody to SEPHS1
Purification:	The antibody was purified by immunogen affinity chromatography.

Target Details

Target:	SEPHS1
Alternative Name:	SEPHS1 (SEPHS1 Products)
Background:	SELD, SPS, SPS1, Selenide, water dikinase 1, Selenium donor protein 1, Selenophosphate synthase 1
Gene ID:	22929, 109079

Target Details

UniProt: [P49903, Q8BH69](#)

Application Details

Application Notes: WB (1:500 - 1:2000), IF/IC (1:10 - 1:100)

Restrictions: For Research Use only

Handling

Format: Liquid

Buffer: Liquid in 0.42 % Potassium phosphate, 0.87 % Sodium chloride, pH 7.3, 30 % glycerol, and 0.01 % sodium azide.

Preservative: Sodium azide

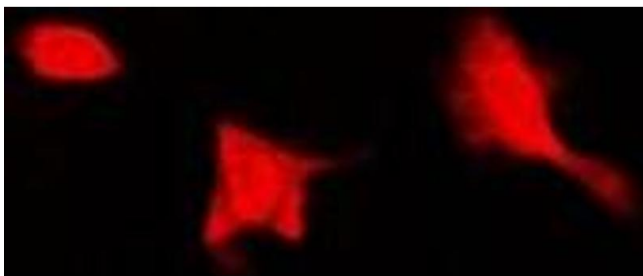
Precaution of Use: This product contains Sodium azide: a POISONOUS AND HAZARDOUS SUBSTANCE which should be handled by trained staff only.

Storage: -20 °C

Storage Comment: Shipped at 4°C. Upon delivery aliquot and store at -20°C for one year. Avoid freeze/thaw cycles.

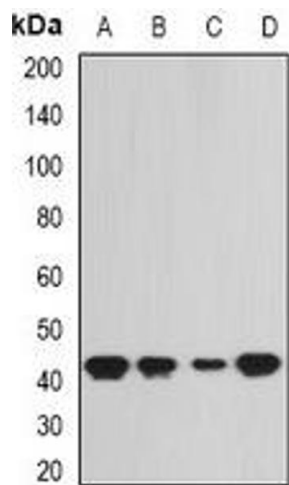
Expiry Date: 12 months

Images



Immunofluorescence

Image 1. Immunofluorescent analysis of SEPHS1 staining in HeLa cells. Formalin-fixed cells were permeabilized with 0.1% Triton X-100 in TBS for 5-10 minutes and blocked with 3% BSA-PBS for 30 minutes at room temperature. Cells were probed with the primary antibody



Western Blotting

Image 2. Western blot analysis of SEPHS1 expression in SW620 (A), HepG2 (B), mouse liver (C), rat kidney (D) whole cell lysates.