



Datasheet for ABIN7306668
anti-ATOH1 antibody



[Go to Product page](#)

2 Images

Overview

Quantity:	100 µL
Target:	ATOH1
Reactivity:	Human
Host:	Rabbit
Clonality:	Polyclonal
Conjugate:	This ATOH1 antibody is un-conjugated
Application:	Western Blotting (WB), Immunofluorescence (IF), Immunochromatography (IC)

Product Details

Immunogen:	Recombinant full length protein of human MATH-1
Specificity:	Recognizes endogenous levels of MATH-1 protein.
Characteristics:	Rabbit polyclonal antibody to MATH-1
Purification:	The antibody was purified by immunogen affinity chromatography.

Target Details

Target:	ATOH1
Alternative Name:	MATH-1 (ATOH1 Products)
Background:	ATH1, BHLHA14, Protein atonal homolog 1, Class A basic helix-loop-helix protein 14, bHLHa14, Helix-loop-helix protein hATH-1, hATH1
Gene ID:	474

Target Details

UniProt: [Q92858](#)

Application Details

Application Notes: WB (1:500 - 1:2000), IF/IC (1:50 - 1:200)

Restrictions: For Research Use only

Handling

Format: Liquid

Buffer: Liquid in 0.42 % Potassium phosphate, 0.87 % Sodium chloride, pH 7.3, 30 % glycerol, and 0.01 % sodium azide.

Preservative: Sodium azide

Precaution of Use: This product contains Sodium azide: a POISONOUS AND HAZARDOUS SUBSTANCE which should be handled by trained staff only.

Storage: -20 °C

Storage Comment: Shipped at 4°C. Upon delivery aliquot and store at -20°C for one year. Avoid freeze/thaw cycles.

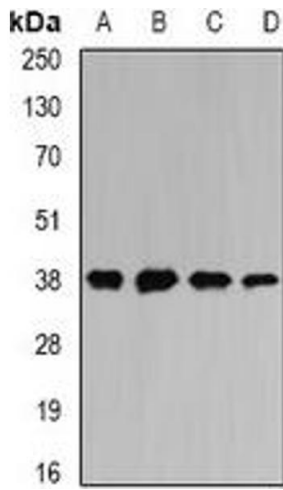
Expiry Date: 12 months

Images



Immunofluorescence

Image 1. Immunofluorescent analysis of MATH-1 staining in U2OS cells. Formalin-fixed cells were permeabilized with 0.1% Triton X-100 in TBS for 5-10 minutes and blocked with 3% BSA-PBS for 30 minutes at room temperature. Cells were probed with the primary antibody



Western Blotting

Image 2. Western blot analysis of MATH-1 expression in SW620 (A), HepG2 (B), mouse liver (C), mouse heart (D) whole cell lysates.