

Datasheet for ABIN7306670
anti-BHLHE40 antibody

3 Images

[Go to Product page](#)

Overview

Quantity:	100 µL
Target:	BHLHE40
Reactivity:	Human, Mouse
Host:	Rabbit
Clonality:	Polyclonal
Conjugate:	This BHLHE40 antibody is un-conjugated
Application:	Western Blotting (WB), Immunohistochemistry (IHC), Immunofluorescence (IF), Immunochromatography (IC)

Product Details

Immunogen:	Recombinant full length protein of human SHARP-2
Specificity:	Recognizes endogenous levels of SHARP-2 protein.
Characteristics:	Rabbit polyclonal antibody to SHARP-2
Purification:	The antibody was purified by immunogen affinity chromatography.

Target Details

Target:	BHLHE40
Alternative Name:	SHARP-2 (BHLHE40 Products)
Background:	BHLHB2, DEC1, SHARP2, STRA13, Class E basic helix-loop-helix protein 40, bHLHe40, Class B basic helix-loop-helix protein 2, bHLHb2, Differentially expressed in chondrocytes protein 1, DEC1, Enhancer-of-split and hairy-related protein 2, SHARP-2, Stimulated by retinoic acid gene

Target Details

	13 protein
Gene ID:	8553, 20893
UniProt:	O14503 , O35185
Pathways:	Photoperiodism

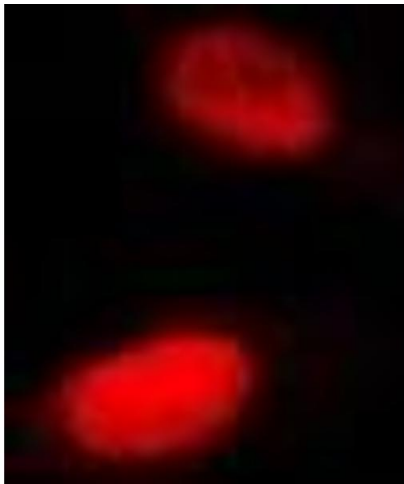
Application Details

Application Notes:	WB (1:500 - 1:2000), IH (1:50 - 1:200), IF/IC (1:50 - 1:200)
Restrictions:	For Research Use only

Handling

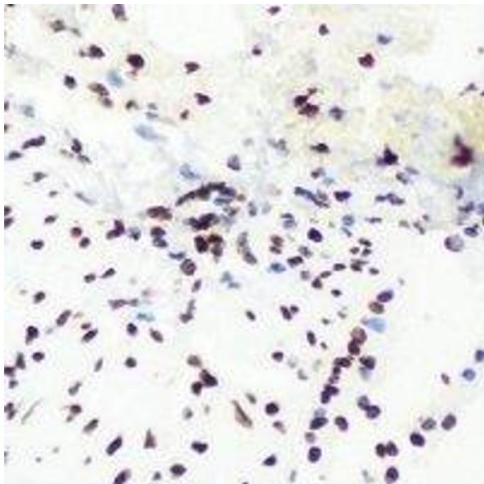
Format:	Liquid
Buffer:	Liquid in 0.42 % Potassium phosphate, 0.87 % Sodium chloride, pH 7.3, 30 % glycerol, and 0.01 % sodium azide.
Preservative:	Sodium azide
Precaution of Use:	This product contains Sodium azide: a POISONOUS AND HAZARDOUS SUBSTANCE which should be handled by trained staff only.
Storage:	-20 °C
Storage Comment:	Shipped at 4°C. Upon delivery aliquot and store at -20°C for one year. Avoid freeze/thaw cycles.
Expiry Date:	12 months

Images



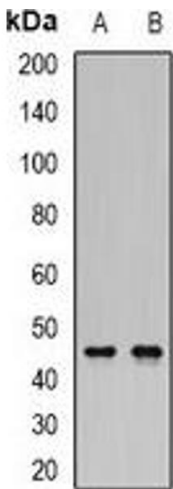
Immunofluorescence

Image 1. Immunofluorescent analysis of SHARP-2 staining in Hela cells. Formalin-fixed cells were permeabilized with 0.1% Triton X-100 in TBS for 5-10 minutes and blocked with 3% BSA-PBS for 30 minutes at room temperature. Cells were probed with the primary antibody.



Immunohistochemistry

Image 2. Immunohistochemical analysis of SHARP-2 staining in mouse lung formalin fixed paraffin embedded tissue section. The section was pre-treated using heat mediated antigen retrieval with sodium citrate buffer (pH 6.0). The section was then incubated with the



Western Blotting

Image 3. Western blot analysis of SHARP-2 expression in HepG2 (A), mouse kidney (B) whole cell lysates.