

Datasheet for ABIN7306674

anti-CARS antibody

3 Images

[Go to Product page](#)

Overview

Quantity:	100 µL
Target:	CARS
Reactivity:	Human
Host:	Rabbit
Clonality:	Polyclonal
Conjugate:	This CARS antibody is un-conjugated
Application:	Western Blotting (WB), Immunohistochemistry (IHC), Immunofluorescence (IF), Immunochromatography (IC)

Product Details

Immunogen:	Recombinant full length protein of human CARS
Specificity:	Recognizes endogenous levels of CARS protein.
Characteristics:	Rabbit polyclonal antibody to CARS
Purification:	The antibody was purified by immunogen affinity chromatography.

Target Details

Target:	CARS
Alternative Name:	CARS (CARS Products)
Background:	Cysteine--tRNA ligase, cytoplasmic, Cysteinyl-tRNA synthetase, CysRS
Gene ID:	833

Target Details

UniProt: [P49589](#)

Application Details

Application Notes: WB (1:500 - 1:2000), IH (1:50 - 1:200), IF/IC (1:10 - 1:100)

Restrictions: For Research Use only

Handling

Format: Liquid

Buffer: Liquid in 0.42 % Potassium phosphate, 0.87 % Sodium chloride, pH 7.3, 30 % glycerol, and 0.01 % sodium azide.

Preservative: Sodium azide

Precaution of Use: This product contains Sodium azide: a POISONOUS AND HAZARDOUS SUBSTANCE which should be handled by trained staff only.

Storage: -20 °C

Storage Comment: Shipped at 4°C. Upon delivery aliquot and store at -20°C for one year. Avoid freeze/thaw cycles.

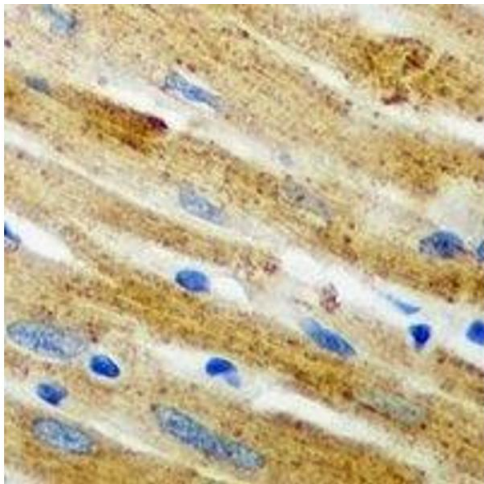
Expiry Date: 12 months

Images



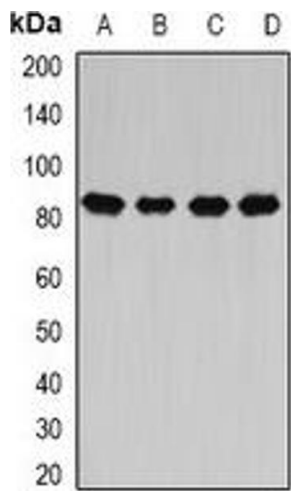
Immunofluorescence

Image 1. Immunofluorescent analysis of CARS staining in HeLa cells. Formalin-fixed cells were permeabilized with 0.1% Triton X-100 in TBS for 5-10 minutes and blocked with 3% BSA-PBS for 30 minutes at room temperature. Cells were probed with the primary antibody i



Immunohistochemistry

Image 2. Immunohistochemical analysis of CARS staining in mouse heart formalin fixed paraffin embedded tissue section. The section was pre-treated using heat mediated antigen retrieval with sodium citrate buffer (pH 6.0). The section was then incubated with the an



Western Blotting

Image 3. Western blot analysis of CARS expression in Hela (A), MCF7 (B), mouse liver (C), rat spinal cord (D) whole cell lysates.