

Datasheet for ABIN7306676

**anti-CCBL1 antibody****3** Images[Go to Product page](#)

## Overview

Quantity:	100 µL
Target:	CCBL1
Reactivity:	Human
Host:	Rabbit
Clonality:	Polyclonal
Conjugate:	This CCBL1 antibody is un-conjugated
Application:	Western Blotting (WB), Immunohistochemistry (IHC), Immunofluorescence (IF), Immunochromatography (IC)

## Product Details

Immunogen:	Recombinant full length protein of human CCBL1
Specificity:	Recognizes endogenous levels of CCBL1 protein.
Characteristics:	Rabbit polyclonal antibody to CCBL1
Purification:	The antibody was purified by immunogen affinity chromatography.

## Target Details

Target:	CCBL1
Alternative Name:	CCBL1 ( <a href="#">CCBL1 Products</a> )
Background:	Kynurenine--oxoglutarate transaminase 1, Cysteine-S-conjugate beta-lyase, Glutamine transaminase K, GTK, Glutamine--phenylpyruvate transaminase, Kynurenine aminotransferase I, KATI, Kynurenine--oxoglutarate transaminase I

## Target Details

Gene ID:	883
UniProt:	<a href="#">Q16773</a>

## Application Details

Application Notes:	WB (1:500 - 1:2000), IH (1:50 - 1:200), IF/IC (1:10 - 1:100)
Restrictions:	For Research Use only

## Handling

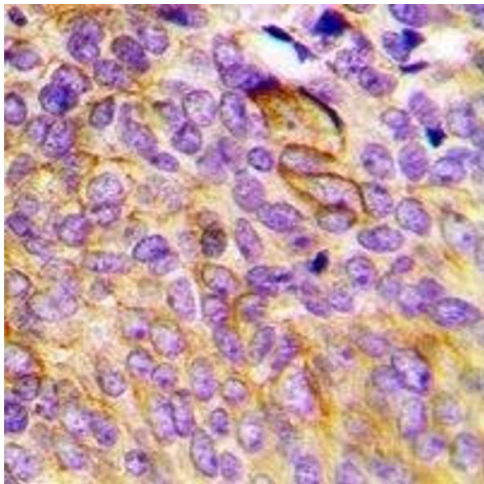
Format:	Liquid
Buffer:	Liquid in 0.42 % Potassium phosphate, 0.87 % Sodium chloride, pH 7.3, 30 % glycerol, and 0.01 % sodium azide.
Preservative:	Sodium azide
Precaution of Use:	This product contains Sodium azide: a POISONOUS AND HAZARDOUS SUBSTANCE which should be handled by trained staff only.
Storage:	-20 °C
Storage Comment:	Shipped at 4°C. Upon delivery aliquot and store at -20°C for one year. Avoid freeze/thaw cycles.
Expiry Date:	12 months

## Images



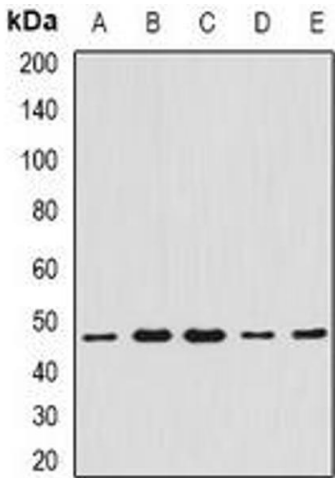
### Immunofluorescence

**Image 1.** Immunofluorescent analysis of CCBL1 staining in Hela cells. Formalin-fixed cells were permeabilized with 0.1% Triton X-100 in TBS for 5-10 minutes and blocked with 3% BSA-PBS for 30 minutes at room temperature. Cells were probed with the primary antibody



Immunohistochemistry

**Image 2.** Immunohistochemical analysis of CCBL1 staining in human breast cancer formalin fixed paraffin embedded tissue section. The section was pre-treated using heat mediated antigen retrieval with sodium citrate buffer (pH 6.0). The section was then incubated wi



Western Blotting

**Image 3.** Western blot analysis of CCBL1 expression in Hela (A), A549 (B), mouse liver (C), mouse heart (D), rat kidney (E) whole cell lysates.