

Datasheet for ABIN7306678

anti-CCM2 antibody**2** Images[Go to Product page](#)

Overview

Quantity:	100 µL
Target:	CCM2
Reactivity:	Human, Mouse, Rat
Host:	Rabbit
Clonality:	Polyclonal
Conjugate:	This CCM2 antibody is un-conjugated
Application:	Western Blotting (WB), Immunohistochemistry (IHC)

Product Details

Immunogen:	Recombinant full length protein of human Malcavernin
Specificity:	Recognizes endogenous levels of Malcavernin protein.
Characteristics:	Rabbit polyclonal antibody to Malcavernin
Purification:	The antibody was purified by immunogen affinity chromatography.

Target Details

Target:	CCM2
Alternative Name:	Malcavernin (CCM2 Products)
Background:	C7orf22, Malcavernin, Cerebral cavernous malformations 2 protein
Gene ID:	83605, 216527
UniProt:	Q9BSQ5 , Q8K2Y9

Target Details

Pathways: [Cell-Cell Junction Organization](#)

Application Details

Application Notes: WB (1:500 - 1:2000), IH (1:50 - 1:200)

Restrictions: For Research Use only

Handling

Format: Liquid

Buffer: Liquid in 0.42 % Potassium phosphate, 0.87 % Sodium chloride, pH 7.3, 30 % glycerol, and 0.01 % sodium azide.

Preservative: Sodium azide

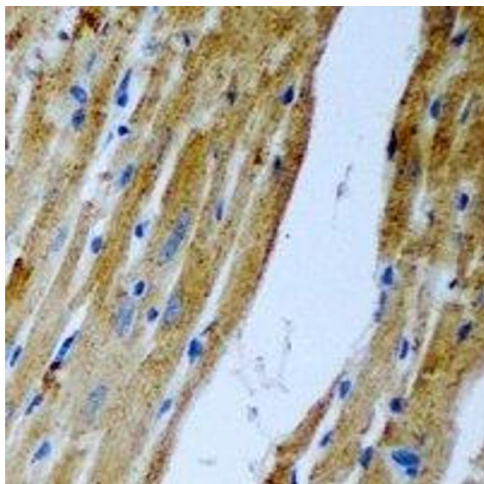
Precaution of Use: This product contains Sodium azide: a POISONOUS AND HAZARDOUS SUBSTANCE which should be handled by trained staff only.

Storage: -20 °C

Storage Comment: Shipped at 4°C. Upon delivery aliquot and store at -20°C for one year. Avoid freeze/thaw cycles.

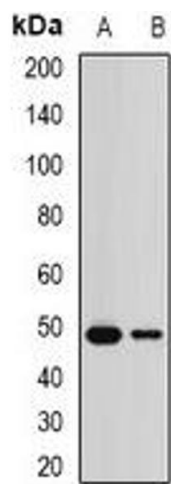
Expiry Date: 12 months

Images



Immunohistochemistry

Image 1. Immunohistochemical analysis of Malcavernin staining in rat heart formalin fixed paraffin embedded tissue section. The section was pre-treated using heat mediated antigen retrieval with sodium citrate buffer (pH 6.0). The section was then incubated with t



Western Blotting

Image 2. Western blot analysis of Malcavernin expression in mouse brain (A), mouse testis (B) whole cell lysates.