

Datasheet for ABIN7306730

anti-KIF3A antibody

3 Images

[Go to Product page](#)

Overview

Quantity:	100 µL
Target:	KIF3A
Reactivity:	Human, Mouse, Rat
Host:	Rabbit
Clonality:	Polyclonal
Conjugate:	This KIF3A antibody is un-conjugated
Application:	Western Blotting (WB), Immunohistochemistry (IHC), Immunofluorescence (IF), Immunochromatography (IC)

Product Details

Immunogen:	Recombinant full length protein of human KIF3A
Specificity:	Recognizes endogenous levels of KIF3A protein.
Characteristics:	Rabbit polyclonal antibody to KIF3A
Purification:	The antibody was purified by immunogen affinity chromatography.

Target Details

Target:	KIF3A
Alternative Name:	KIF3A (KIF3A Products)
Background:	KIF3, Kinesin-like protein KIF3A, Microtubule plus end-directed kinesin motor 3A
Gene ID:	11127, 16568

Target Details

UniProt:	Q9Y496, P28741
Pathways:	Hedgehog Signaling

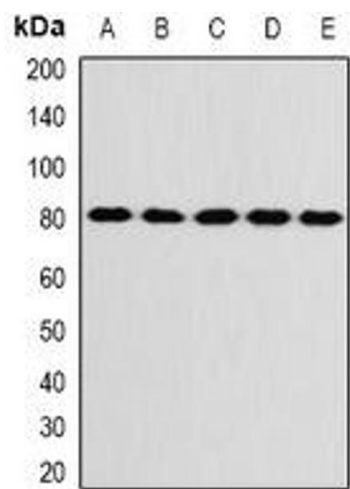
Application Details

Application Notes:	WB (1:500 - 1:2000), IH (1:50 - 1:200), IF/IC (1:50 - 1:200)
Restrictions:	For Research Use only

Handling

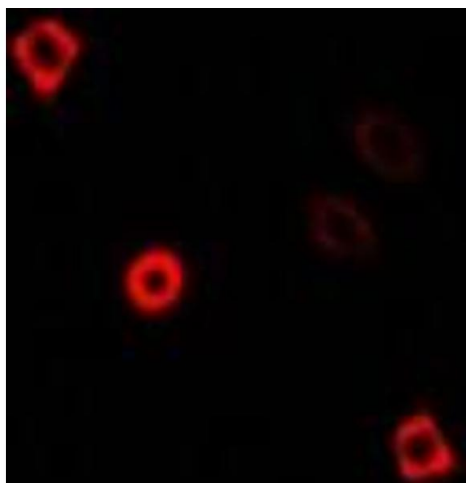
Format:	Liquid
Buffer:	Liquid in 0.42 % Potassium phosphate, 0.87 % Sodium chloride, pH 7.3, 30 % glycerol, and 0.01 % sodium azide.
Preservative:	Sodium azide
Precaution of Use:	This product contains Sodium azide: a POISONOUS AND HAZARDOUS SUBSTANCE which should be handled by trained staff only.
Storage:	-20 °C
Storage Comment:	Shipped at 4°C. Upon delivery aliquot and store at -20°C for one year. Avoid freeze/thaw cycles.
Expiry Date:	12 months

Images



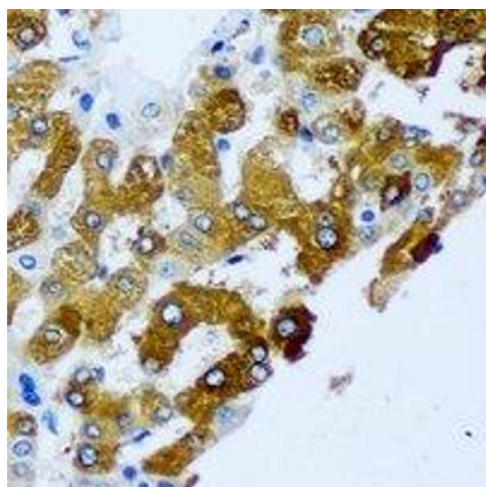
Western Blotting

Image 1. Western blot analysis of KIF3A expression in SW480 (A), SKOV3 (B), mouse brain (C), mouse ovary (D), rat liver (E) whole cell lysates.



Immunofluorescence

Image 2. Immunofluorescent analysis of KIF3A staining in U2OS cells. Formalin-fixed cells were permeabilized with 0.1% Triton X-100 in TBS for 5-10 minutes and blocked with 3% BSA-PBS for 30 minutes at room temperature. Cells were probed with the primary antibody



Immunohistochemistry

Image 3. Immunohistochemical analysis of KIF3A staining in human liver cancer formalin fixed paraffin embedded tissue section. The section was pre-treated using heat mediated antigen retrieval with sodium citrate buffer (pH 6.0). The section was then incubated with