

Datasheet for ABIN7306752

anti-CLEC11A antibody**2** Images[Go to Product page](#)

Overview

Quantity:	100 µL
Target:	CLEC11A
Reactivity:	Human, Mouse, Rat
Host:	Rabbit
Clonality:	Polyclonal
Conjugate:	This CLEC11A antibody is un-conjugated
Application:	Western Blotting (WB), Immunofluorescence (IF), Immunochromatography (IC)

Product Details

Immunogen:	Recombinant full length protein of human p47
Specificity:	Recognizes endogenous levels of p47 protein.
Characteristics:	Rabbit polyclonal antibody to p47
Purification:	The antibody was purified by immunogen affinity chromatography.

Target Details

Target:	CLEC11A
Alternative Name:	p47 (CLEC11A Products)
Background:	UBXN2C, NSFL1 cofactor p47, UBX domain-containing protein 2C, p97 cofactor p47
Gene ID:	55968, 386649, 83809
UniProt:	Q9UNZ2 , Q9CZ44 , O35987

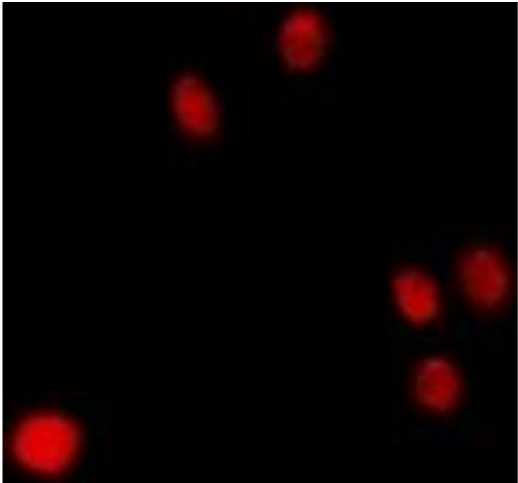
Application Details

Application Notes:	WB (1:500 - 1:2000), IF/IC (1:50 - 1:200)
Restrictions:	For Research Use only

Handling

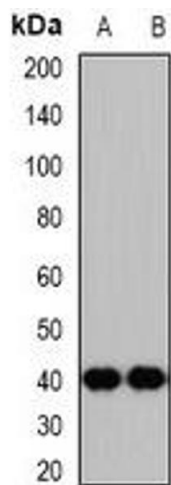
Format:	Liquid
Buffer:	Liquid in 0.42 % Potassium phosphate, 0.87 % Sodium chloride, pH 7.3, 30 % glycerol, and 0.01 % sodium azide.
Preservative:	Sodium azide
Precaution of Use:	This product contains Sodium azide: a POISONOUS AND HAZARDOUS SUBSTANCE which should be handled by trained staff only.
Storage:	-20 °C
Storage Comment:	Shipped at 4°C. Upon delivery aliquot and store at -20°C for one year. Avoid freeze/thaw cycles.
Expiry Date:	12 months

Images



Immunofluorescence

Image 1. Immunofluorescent analysis of p47 staining in Hela cells. Formalin-fixed cells were permeabilized with 0.1% Triton X-100 in TBS for 5-10 minutes and blocked with 3% BSA-PBS for 30 minutes at room temperature. Cells were probed with the primary antibody in



Western Blotting

Image 2. Western blot analysis of p47 expression in mouse brain (A), rat kidney (B) whole cell lysates.