

Datasheet for ABIN7306766  
**anti-PPM1A antibody**



[Go to Product page](#)

2 Images

## Overview

Quantity:	100 µL
Target:	PPM1A
Reactivity:	Human, Mouse, Rat
Host:	Rabbit
Clonality:	Polyclonal
Conjugate:	This PPM1A antibody is un-conjugated
Application:	Western Blotting (WB), Immunofluorescence (IF), Immunochromatography (IC)

## Product Details

Immunogen:	Recombinant full length protein of human PP2C-alpha
Specificity:	Recognizes endogenous levels of PP2C-alpha protein.
Characteristics:	Rabbit polyclonal antibody to PP2C-alpha
Purification:	The antibody was purified by immunogen affinity chromatography.

## Target Details

Target:	PPM1A
Alternative Name:	PP2C-alpha ( <a href="#">PPM1A Products</a> )
Background:	PPPM1A, Protein phosphatase 1A, Protein phosphatase 2C isoform alpha, PP2C-alpha, Protein phosphatase 1A
Gene ID:	5494, 19042, 24666

## Target Details

UniProt: [P35813](#), [P49443](#), [P20650](#)

## Application Details

Application Notes: WB (1:500 - 1:2000), IF/IC (1:50 - 1:200)

Restrictions: For Research Use only

## Handling

Format: Liquid

Buffer: Liquid in 0.42 % Potassium phosphate, 0.87 % Sodium chloride, pH 7.3, 30 % glycerol, and 0.01 % sodium azide.

Preservative: Sodium azide

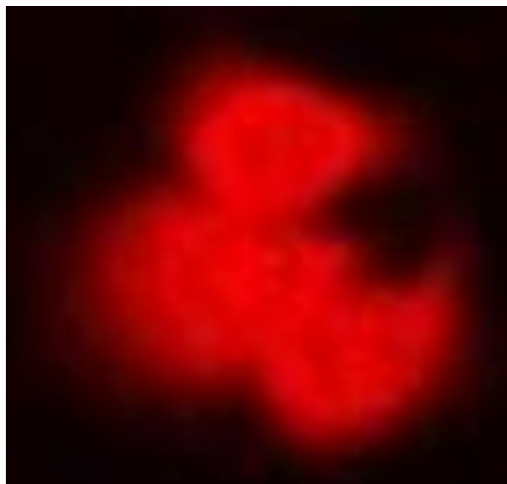
Precaution of Use: This product contains Sodium azide: a POISONOUS AND HAZARDOUS SUBSTANCE which should be handled by trained staff only.

Storage: -20 °C

Storage Comment: Shipped at 4°C. Upon delivery aliquot and store at -20°C for one year. Avoid freeze/thaw cycles.

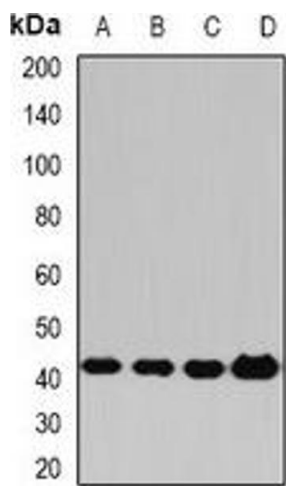
Expiry Date: 12 months

## Images



### Immunofluorescence

**Image 1.** Immunofluorescent analysis of PP2C-alpha staining in HeLa cells. Formalin-fixed cells were permeabilized with 0.1% Triton X-100 in TBS for 5-10 minutes and blocked with 3% BSA-PBS for 30 minutes at room temperature. Cells were probed with the primary anti



Western Blotting

**Image 2.** Western blot analysis of PP2C-alpha expression in Hela (A), HepG2 (B), mouse liver (C), rat brain (D) whole cell lysates.