



[Go to Product page](#)

Datasheet for ABIN7306768

anti-PSAT1 antibody

2 Images

Overview

| | |
|--------------|---|
| Quantity: | 100 µL |
| Target: | PSAT1 |
| Reactivity: | Human |
| Host: | Rabbit |
| Clonality: | Polyclonal |
| Conjugate: | This PSAT1 antibody is un-conjugated |
| Application: | Western Blotting (WB), Immunofluorescence (IF), Immunochromatography (IC) |

Product Details

| | |
|------------------|---|
| Immunogen: | Recombinant full length protein of human PSAT1 |
| Specificity: | Recognizes endogenous levels of PSAT1 protein. |
| Characteristics: | Rabbit polyclonal antibody to PSAT1 |
| Purification: | The antibody was purified by immunogen affinity chromatography. |

Target Details

| | |
|-------------------|---|
| Target: | PSAT1 |
| Alternative Name: | PSAT1 (PSAT1 Products) |
| Background: | PSA, Phosphoserine aminotransferase, Phosphohydroxythreonine aminotransferase, PSAT |
| Gene ID: | 29968 |
| UniProt: | Q9Y617 |

Target Details

Pathways: [Warburg Effect](#)

Application Details

Application Notes: WB (1:500 - 1:2000), IF/IC (1:10 - 1:100)

Restrictions: For Research Use only

Handling

Format: Liquid

Buffer: Liquid in 0.42 % Potassium phosphate, 0.87 % Sodium chloride, pH 7.3, 30 % glycerol, and 0.01 % sodium azide.

Preservative: Sodium azide

Precaution of Use: This product contains Sodium azide: a POISONOUS AND HAZARDOUS SUBSTANCE which should be handled by trained staff only.

Storage: -20 °C

Storage Comment: Shipped at 4°C. Upon delivery aliquot and store at -20°C for one year. Avoid freeze/thaw cycles.

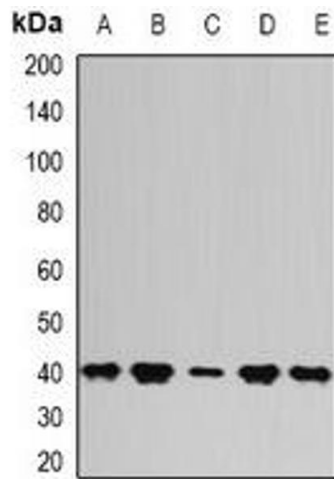
Expiry Date: 12 months

Images



Immunofluorescence

Image 1. Immunofluorescent analysis of PSAT1 staining in U2OS cells. Formalin-fixed cells were permeabilized with 0.1% Triton X-100 in TBS for 5-10 minutes and blocked with 3% BSA-PBS for 30 minutes at room temperature. Cells were probed with the primary antibody



Western Blotting

Image 2. Western blot analysis of PSAT1 expression in Hela (A), SKOV3 (B), mouse kidney (C), mouse thymus (D), rat brain (E) whole cell lysates.