

Datasheet for ABIN7306772

**anti-PYGL antibody****3** Images[Go to Product page](#)

## Overview

|              |  |
|--------------|--|
| Quantity:    | 100 µL   |
| Target:      | PYGL   |
| Reactivity:  | Human, Rat, Mouse  |
| Host:        | Rabbit   |
| Clonality:   | Polyclonal   |
| Conjugate:   | This PYGL antibody is un-conjugated  |
| Application: | Western Blotting (WB), Immunohistochemistry (IHC), Immunofluorescence (IF),<br>Immunochromatography (IC) |

## Product Details

|                  |   |
|------------------|---|
| Immunogen:       | Recombinant full length protein of human PYGL                   |
| Specificity:     | Recognizes endogenous levels of PYGL protein.                   |
| Characteristics: | Rabbit polyclonal antibody to PYGL                              |
| Purification:    | The antibody was purified by immunogen affinity chromatography. |

## Target Details

|                   |  |
|-------------------|--|
| Target:           | PYGL                                   |
| Alternative Name: | PYGL ( <a href="#">PYGL Products</a> ) |
| Background:       | Glycogen phosphorylase, liver form     |
| Gene ID:          | 5836, 110095, 64035                    |

## Target Details

|           |  |
|-----------|--|
| UniProt:  | <a href="#">P06737</a> , <a href="#">Q9ET01</a> , <a href="#">P09811</a>                     |
| Pathways: | <a href="#">Carbohydrate Homeostasis</a> , <a href="#">Cellular Glucan Metabolic Process</a> |

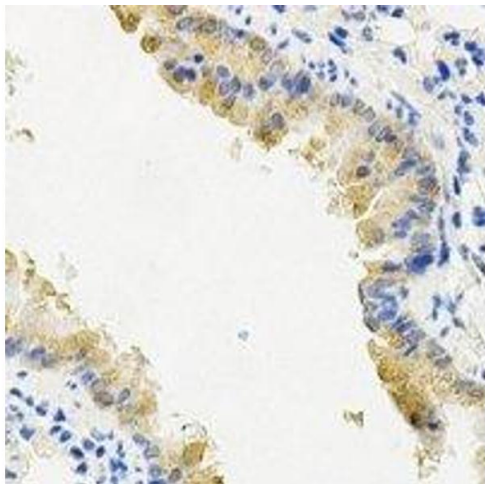
## Application Details

|                    |  |
|--------------------|--|
| Application Notes: | WB (1:500 - 1:2000), IH (1:50 - 1:200), IF/IC (1:50 - 1:200) |
| Restrictions:      | For Research Use only  |

## Handling

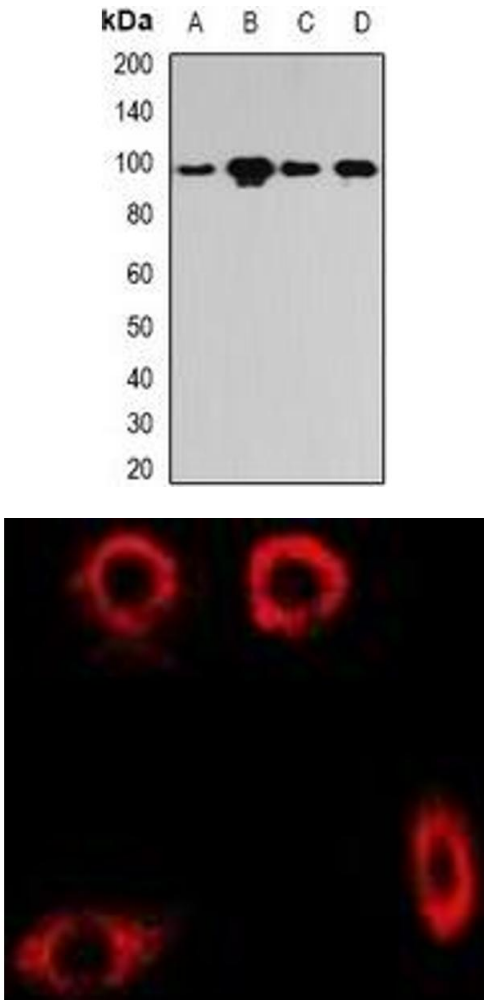
|                    |  |
|--------------------|--|
| Format:            | Liquid   |
| Buffer:            | Liquid in 0.42 % Potassium phosphate, 0.87 % Sodium chloride, pH 7.3, 30 % glycerol, and 0.01 % sodium azide.          |
| Preservative:      | Sodium azide   |
| Precaution of Use: | This product contains Sodium azide: a POISONOUS AND HAZARDOUS SUBSTANCE which should be handled by trained staff only. |
| Storage:           | -20 °C   |
| Storage Comment:   | Shipped at 4°C. Upon delivery aliquot and store at -20°C for one year. Avoid freeze/thaw cycles.                       |
| Expiry Date:       | 12 months  |

## Images



### Immunohistochemistry

**Image 1.** Immunohistochemical analysis of PYGL staining in mouse lung formalin fixed paraffin embedded tissue section. The section was pre-treated using heat mediated antigen retrieval with sodium citrate buffer (pH 6.0). The section was then incubated with the ant



Western Blotting

**Image 2.** Western blot analysis of PYGL expression in Hela (A), SKOV3 (B), mouse lung (C), rat liver (D) whole cell lysates.

Immunofluorescence

**Image 3.** Immunofluorescent analysis of PYGL staining in MCF7 cells. Formalin-fixed cells were permeabilized with 0.1% Triton X-100 in TBS for 5-10 minutes and blocked with 3% BSA-PBS for 30 minutes at room temperature. Cells were probed with the primary antibody i