

Datasheet for ABIN7306786

anti-SCYL1 antibody

3 Images

[Go to Product page](#)

Overview

| | |
|--------------|--|
| Quantity: | 100 µL |
| Target: | SCYL1 |
| Reactivity: | Human |
| Host: | Rabbit |
| Clonality: | Polyclonal |
| Conjugate: | This SCYL1 antibody is un-conjugated |
| Application: | Western Blotting (WB), Immunohistochemistry (IHC), Immunofluorescence (IF), Immunochromatography (IC) |

Product Details

| | |
|------------------|---|
| Immunogen: | Recombinant full length protein of human SCYL1 |
| Specificity: | Recognizes endogenous levels of SCYL1 protein. |
| Characteristics: | Rabbit polyclonal antibody to SCYL1 |
| Purification: | The antibody was purified by immunogen affinity chromatography. |

Target Details

| | |
|-------------------|---|
| Target: | SCYL1 |
| Alternative Name: | SCYL1 (SCYL1 Products) |
| Background: | CVAK90, GKLP, NTKL, TAPK, TEIF, TRAP, N-terminal kinase-like protein, Coated vesicle-associated kinase of 90 kDa, SCY1-like protein 1, Telomerase regulation-associated protein, Telomerase transcriptional element-interacting factor, Teratoma-associated tyrosine kinase |

Target Details

| | |
|-----------|-------------------------------|
| Gene ID: | 57410 |
| UniProt: | Q96KG9 |
| Pathways: | p53 Signaling |

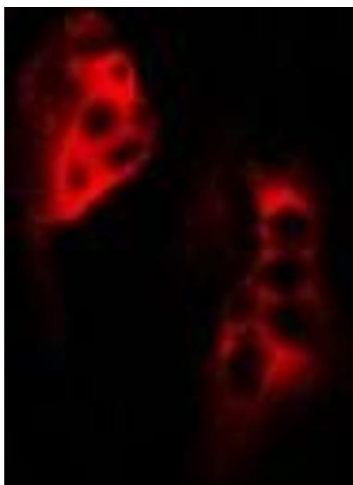
Application Details

| | |
|--------------------|--|
| Application Notes: | WB (1:500 - 1:2000), IH (1:50 - 1:200), IF/IC (1:50 - 1:100) |
| Restrictions: | For Research Use only |

Handling

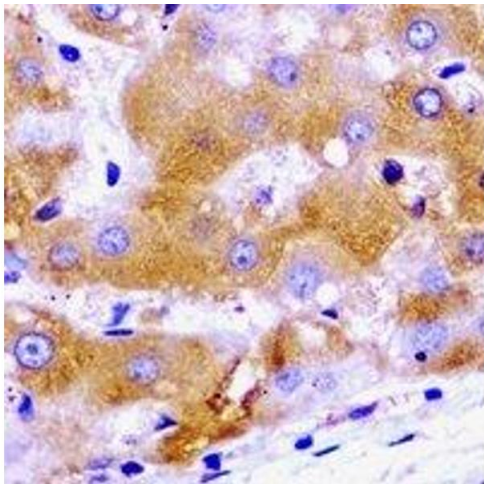
| | |
|--------------------|--|
| Format: | Liquid |
| Buffer: | Liquid in 0.42 % Potassium phosphate, 0.87 % Sodium chloride, pH 7.3, 30 % glycerol, and 0.01 % sodium azide. |
| Preservative: | Sodium azide |
| Precaution of Use: | This product contains Sodium azide: a POISONOUS AND HAZARDOUS SUBSTANCE which should be handled by trained staff only. |
| Storage: | -20 °C |
| Storage Comment: | Shipped at 4°C. Upon delivery aliquot and store at -20°C for one year. Avoid freeze/thaw cycles. |
| Expiry Date: | 12 months |

Images



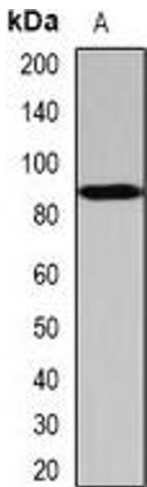
Immunofluorescence

Image 1. Immunofluorescent analysis of SCYL1 staining in MCF7 cells. Formalin-fixed cells were permeabilized with 0.1% Triton X-100 in TBS for 5-10 minutes and blocked with 3% BSA-PBS for 30 minutes at room temperature. Cells were probed with the primary antibody



Immunohistochemistry

Image 2. Immunohistochemical analysis of SCYL1 staining in human liver cancer formalin fixed paraffin embedded tissue section. The section was pre-treated using heat mediated antigen retrieval with sodium citrate buffer (pH 6.0). The section was then incubated with



Western Blotting

Image 3. Western blot analysis of SCYL1 expression in HeLa (A) whole cell lysates.