



[Go to Product page](#)

Datasheet for ABIN7306790  
**anti-SLC20A2 antibody**

2 Images

### Overview

Quantity:	100 µL
Target:	SLC20A2
Reactivity:	Human
Host:	Rabbit
Clonality:	Polyclonal
Conjugate:	This SLC20A2 antibody is un-conjugated
Application:	Western Blotting (WB), Immunofluorescence (IF), Immunochromatography (IC)

### Product Details

Immunogen:	Recombinant full length protein of human PiT2
Specificity:	Recognizes endogenous levels of PiT2 protein.
Characteristics:	Rabbit polyclonal antibody to PiT2
Purification:	The antibody was purified by immunogen affinity chromatography.

### Target Details

Target:	SLC20A2
Alternative Name:	PiT2 ( <a href="#">SLC20A2 Products</a> )
Background:	GLVR2, PIT2, Sodium-dependent phosphate transporter 2, Gibbon ape leukemia virus receptor 2, GLVR-2, Phosphate transporter 2, PiT-2, Pit2, hPiT2, Solute carrier family 20 member 2
Gene ID:	6575

## Target Details

UniProt: [Q08357](#)

## Application Details

Application Notes: WB (1:500 - 1:2000), IF/IC (1:10 - 1:100)

Restrictions: For Research Use only

## Handling

Format: Liquid

Buffer: Liquid in 0.42 % Potassium phosphate, 0.87 % Sodium chloride, pH 7.3, 30 % glycerol, and 0.01 % sodium azide.

Preservative: Sodium azide

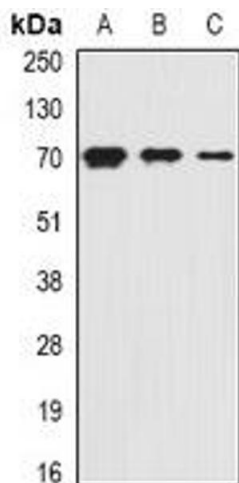
Precaution of Use: This product contains Sodium azide: a POISONOUS AND HAZARDOUS SUBSTANCE which should be handled by trained staff only.

Storage: -20 °C

Storage Comment: Shipped at 4°C. Upon delivery aliquot and store at -20°C for one year. Avoid freeze/thaw cycles.

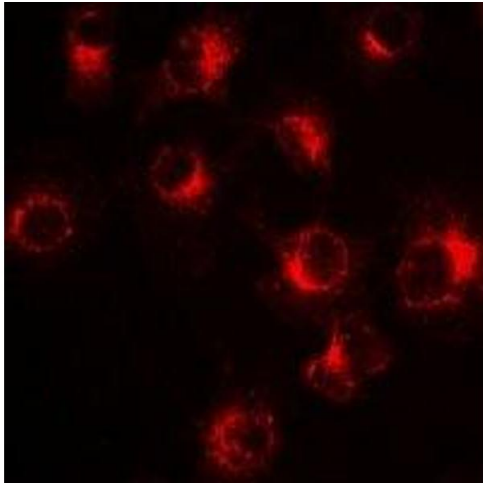
Expiry Date: 12 months

## Images



### Western Blotting

**Image 1.** Western blot analysis of PiT2 expression in HepG2 (A), mouse kidney (B), rat liver (C) whole cell lysates.



### Immunofluorescence

**Image 2.** Immunofluorescent analysis of PiT2 staining in HeLa cells. Formalin-fixed cells were permeabilized with 0.1% Triton X-100 in TBS for 5-10 minutes and blocked with 3% BSA-PBS for 30 minutes at room temperature. Cells were probed with the primary antibody i