

Datasheet for ABIN7306798

anti-SRP19 antibody**3** Images[Go to Product page](#)

Overview

Quantity:	100 µL
Target:	SRP19
Reactivity:	Human, Mouse
Host:	Rabbit
Clonality:	Polyclonal
Conjugate:	This SRP19 antibody is un-conjugated
Application:	Western Blotting (WB), Immunohistochemistry (IHC), Immunofluorescence (IF), Immunochromatography (IC)

Product Details

Immunogen:	Recombinant full length protein of human SRP19
Specificity:	Recognizes endogenous levels of SRP19 protein.
Characteristics:	Rabbit polyclonal antibody to SRP19
Purification:	The antibody was purified by immunogen affinity chromatography.

Target Details

Target:	SRP19
Alternative Name:	SRP19 (SRP19 Products)
Background:	Signal recognition particle 19 kDa protein, SRP19
Gene ID:	6728

Target Details

UniProt:	P09132, Q9D7A6
Pathways:	SARS-CoV-2 Protein Interactome

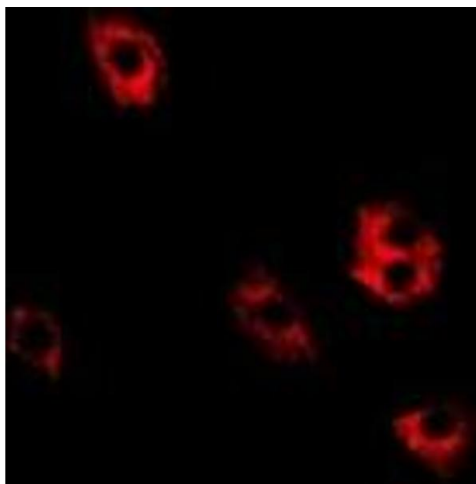
Application Details

Application Notes:	WB (1:500 - 1:2000), IH (1:50 - 1:200), IF/IC (1:10 - 1:100)
Restrictions:	For Research Use only

Handling

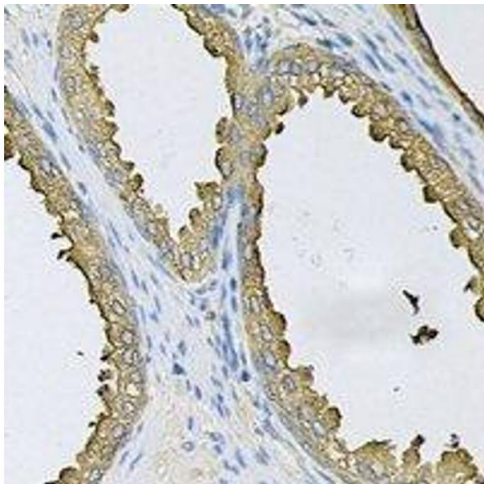
Format:	Liquid
Buffer:	Liquid in 0.42 % Potassium phosphate, 0.87 % Sodium chloride, pH 7.3, 30 % glycerol, and 0.01 % sodium azide.
Preservative:	Sodium azide
Precaution of Use:	This product contains Sodium azide: a POISONOUS AND HAZARDOUS SUBSTANCE which should be handled by trained staff only.
Storage:	-20 °C
Storage Comment:	Shipped at 4°C. Upon delivery aliquot and store at -20°C for one year. Avoid freeze/thaw cycles.
Expiry Date:	12 months

Images



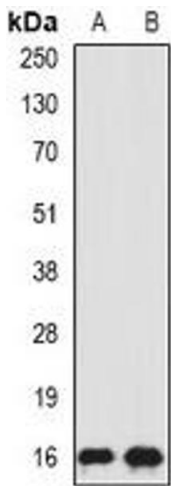
Immunofluorescence

Image 1. Immunofluorescent analysis of SRP19 staining in HeLa cells. Formalin-fixed cells were permeabilized with 0.1% Triton X-100 in TBS for 5-10 minutes and blocked with 3% BSA-PBS for 30 minutes at room temperature. Cells were probed with the primary antibody



Immunohistochemistry

Image 2. Immunohistochemical analysis of SRP19 staining in human prostate formalin fixed paraffin embedded tissue section. The section was pre-treated using heat mediated antigen retrieval with sodium citrate buffer (pH 6.0). The section was then incubated with th



Western Blotting

Image 3. Western blot analysis of SRP19 expression in HepG2 (A), MCF7 (B) whole cell lysates.