



[Go to Product page](#)

Datasheet for ABIN7306802

## anti-SUFUH antibody

### 3 Images

#### Overview

Quantity:	100 µL
Target:	SUFUH
Reactivity:	Human, Mouse, Rat
Host:	Rabbit
Clonality:	Polyclonal
Conjugate:	This SUFUH antibody is un-conjugated
Application:	Western Blotting (WB), Immunohistochemistry (IHC), Immunofluorescence (IF), Immunochromatography (IC)

#### Product Details

Immunogen:	Recombinant full length protein of human SUFU
Specificity:	Recognizes endogenous levels of SUFU protein.
Characteristics:	Rabbit polyclonal antibody to SUFU
Purification:	The antibody was purified by immunogen affinity chromatography.

#### Target Details

Target:	SUFUH
Alternative Name:	SUFU ( <a href="#">SUFUH Products</a> )
Background:	Suppressor of fused homolog, SUFUH
Gene ID:	51684, 24069

## Target Details

UniProt: [Q9UMX1, Q9Z0P7](#)

Pathways: [Hedgehog Signaling, Tube Formation, Maintenance of Protein Location](#)

## Application Details

Application Notes: WB (1:500 - 1:2000), IH (1:50 - 1:200), IF/IC (1:50 - 1:200)

Restrictions: For Research Use only

## Handling

Format: Liquid

Buffer: Liquid in 0.42 % Potassium phosphate, 0.87 % Sodium chloride, pH 7.3, 30 % glycerol, and 0.01 % sodium azide.

Preservative: Sodium azide

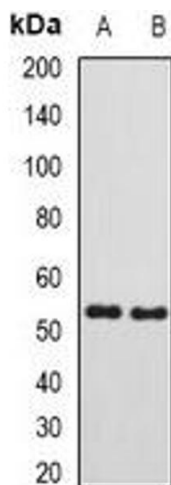
Precaution of Use: This product contains Sodium azide: a POISONOUS AND HAZARDOUS SUBSTANCE which should be handled by trained staff only.

Storage: -20 °C

Storage Comment: Shipped at 4°C. Upon delivery aliquot and store at -20°C for one year. Avoid freeze/thaw cycles.

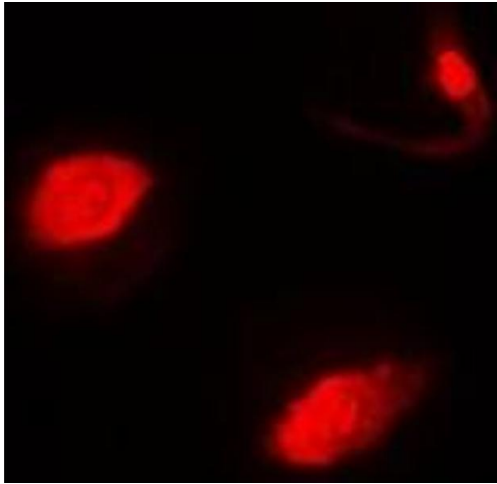
Expiry Date: 12 months

## Images



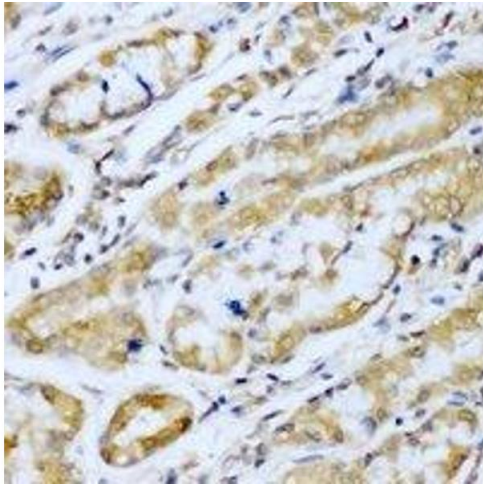
### Western Blotting

**Image 1.** Western blot analysis of SUFU expression in mouse testis (A), rat kidney (B) whole cell lysates.



### Immunofluorescence

**Image 2.** Immunofluorescent analysis of SUFU staining in MCF7 cells. Formalin-fixed cells were permeabilized with 0.1% Triton X-100 in TBS for 5-10 minutes and blocked with 3% BSA-PBS for 30 minutes at room temperature. Cells were probed with the primary antibody i



### Immunohistochemistry

**Image 3.** Immunohistochemical analysis of SUFU staining in human stomach formalin fixed paraffin embedded tissue section. The section was pre-treated using heat mediated antigen retrieval with sodium citrate buffer (pH 6.0). The section was then incubated with the