

Datasheet for ABIN7306818

anti-TREX1 antibody**2** Images[Go to Product page](#)

Overview

Quantity:	100 µL
Target:	TREX1
Reactivity:	Human
Host:	Rabbit
Clonality:	Polyclonal
Conjugate:	This TREX1 antibody is un-conjugated
Application:	Western Blotting (WB), Immunofluorescence (IF), Immunochromatography (IC)

Product Details

Immunogen:	Recombinant full length protein of human TREX1
Specificity:	Recognizes endogenous levels of TREX1 protein.
Characteristics:	Rabbit polyclonal antibody to TREX1
Purification:	The antibody was purified by immunogen affinity chromatography.

Target Details

Target:	TREX1
Alternative Name:	TREX1 (TREX1 Products)
Background:	Three-prime repair exonuclease 1, 3'-5' exonuclease TREX1, DNase III
Gene ID:	11277
UniProt:	Q9NSU2

Target Details

Pathways: [Apoptosis](#)

Application Details

Application Notes: WB (1:500 - 1:2000), IF/IC (1:50 - 1:200)

Restrictions: For Research Use only

Handling

Format: Liquid

Buffer: Liquid in 0.42 % Potassium phosphate, 0.87 % Sodium chloride, pH 7.3, 30 % glycerol, and 0.01 % sodium azide.

Preservative: Sodium azide

Precaution of Use: This product contains Sodium azide: a POISONOUS AND HAZARDOUS SUBSTANCE which should be handled by trained staff only.

Storage: -20 °C

Storage Comment: Shipped at 4°C. Upon delivery aliquot and store at -20°C for one year. Avoid freeze/thaw cycles.

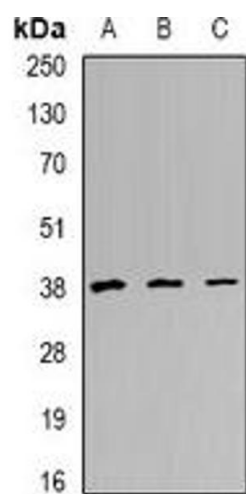
Expiry Date: 12 months

Images



Immunofluorescence

Image 1. Immunofluorescent analysis of TREX1 staining in A549 cells. Formalin-fixed cells were permeabilized with 0.1% Triton X-100 in TBS for 5-10 minutes and blocked with 3% BSA-PBS for 30 minutes at room temperature. Cells were probed with the primary antibody



Western Blotting

Image 2. Western blot analysis of TREX1 expression in HeLa (A), Raji (B), mouse heart (C) whole cell lysates.