

Datasheet for ABIN7306852

anti-GPI antibody**3** Images[Go to Product page](#)

Overview

Quantity:	100 µL
Target:	GPI
Reactivity:	Human, Mouse, Rat
Host:	Rabbit
Clonality:	Polyclonal
Conjugate:	This GPI antibody is un-conjugated
Application:	Western Blotting (WB), Immunohistochemistry (IHC), Immunofluorescence (IF), Immunochromatography (IC)

Product Details

Immunogen:	Recombinant full length protein of human GPI
Specificity:	Recognizes endogenous levels of GPI protein.
Characteristics:	Rabbit polyclonal antibody to GPI
Purification:	The antibody was purified by immunogen affinity chromatography.

Target Details

Target:	GPI
Alternative Name:	GPI (GPI Products)
Target Type:	Viral Protein
Background:	Glucose-6-phosphate isomerase, GPI, Autocrine motility factor, AMF, Neuroleukin, NLK,

Target Details

	Phosphoglucose isomerase, PGI, Phosphohexose isomerase, PHI, Sperm antigen 36, SA-36
Gene ID:	2821, 14751, 292804
UniProt:	P06744 , P06745 , Q6P6V0

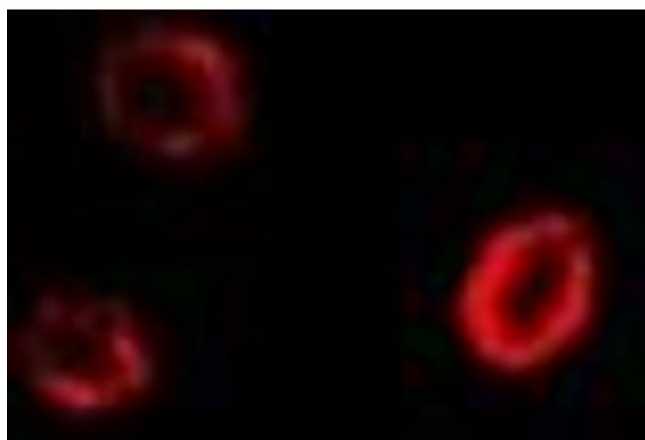
Application Details

Application Notes:	WB (1:500 - 1:2000), IH (1:50 - 1:100), IF/IC (1:50 - 1:100)
Restrictions:	For Research Use only

Handling

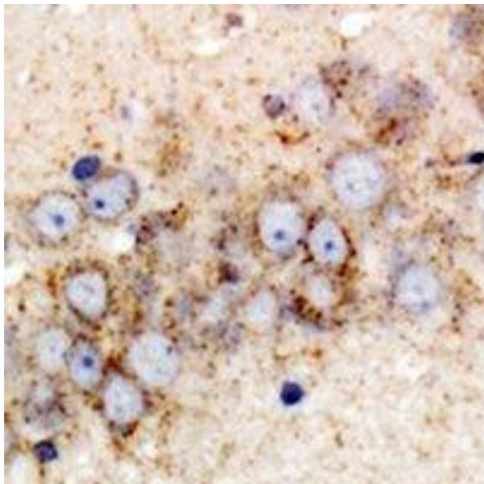
Format:	Liquid
Buffer:	Liquid in 0.42 % Potassium phosphate, 0.87 % Sodium chloride, pH 7.3, 30 % glycerol, and 0.01 % sodium azide.
Preservative:	Sodium azide
Precaution of Use:	This product contains Sodium azide: a POISONOUS AND HAZARDOUS SUBSTANCE which should be handled by trained staff only.
Storage:	-20 °C
Storage Comment:	Shipped at 4°C. Upon delivery aliquot and store at -20°C for one year. Avoid freeze/thaw cycles.
Expiry Date:	12 months

Images



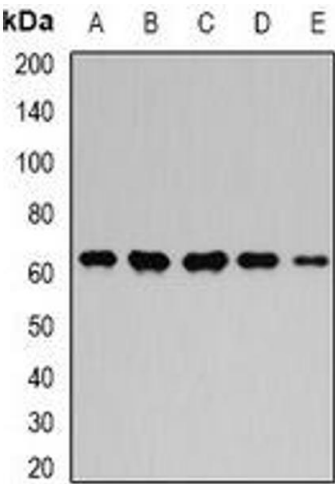
Immunofluorescence

Image 1. Immunofluorescent analysis of GPI staining in U2OS cells. Formalin-fixed cells were permeabilized with 0.1% Triton X-100 in TBS for 5-10 minutes and blocked with 3% BSA-PBS for 30 minutes at room temperature. Cells were probed with the primary antibody in



Immunohistochemistry

Image 2. Immunohistochemical analysis of GPI staining in rat brain formalin fixed paraffin embedded tissue section. The section was pre-treated using heat mediated antigen retrieval with sodium citrate buffer (pH 6.0). The section was then incubated with the antib



Western Blotting

Image 3. Western blot analysis of GPI expression in MCF7 (A), Hela (B), mouse kidney (C), mouse heart (D), rat brain (E) whole cell lysates.