



[Go to Product page](#)

Datasheet for ABIN7306940  
**anti-C16orf80 antibody**

2 Images

### Overview

Quantity:	100 µL
Target:	C16orf80
Reactivity:	Human, Mouse, Rat
Host:	Rabbit
Clonality:	Polyclonal
Conjugate:	This C16orf80 antibody is un-conjugated
Application:	Western Blotting (WB), Immunofluorescence (IF), Immunochromatography (IC)

### Product Details

Immunogen:	Recombinant full length protein of human GTL3
Specificity:	Recognizes endogenous levels of GTL3 protein.
Characteristics:	Rabbit polyclonal antibody to GTL3
Purification:	The antibody was purified by immunogen affinity chromatography.

### Target Details

Target:	C16orf80
Alternative Name:	GTL3 ( <a href="#">C16orf80 Products</a> )
Background:	UPF0468 protein C16orf80, Transcription factor IIB
Gene ID:	29105, 14894, 307642
UniProt:	<a href="#">Q9Y6A4</a> , <a href="#">Q8BTU1</a> , <a href="#">Q499T7</a>

## Application Details

---

Application Notes: WB (1:500 - 1:2000), IF/IC (1:50 - 1:100)

---

Restrictions: For Research Use only

---

## Handling

---

Format: Liquid

---

Buffer: Liquid in 0.42 % Potassium phosphate, 0.87 % Sodium chloride, pH 7.3, 30 % glycerol, and 0.01 % sodium azide.

---

Preservative: Sodium azide

---

Precaution of Use: This product contains Sodium azide: a POISONOUS AND HAZARDOUS SUBSTANCE which should be handled by trained staff only.

---

Storage: -20 °C

---

Storage Comment: Shipped at 4°C. Upon delivery aliquot and store at -20°C for one year. Avoid freeze/thaw cycles.

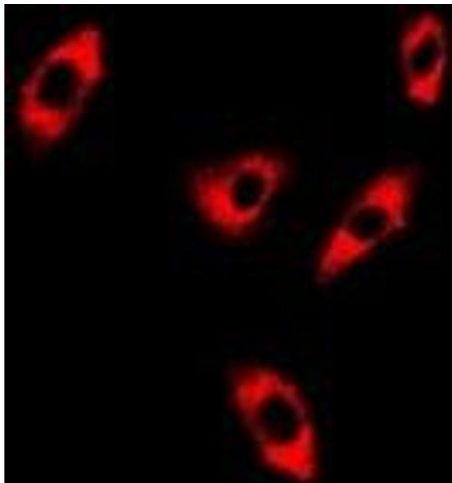
---

Expiry Date: 12 months

---

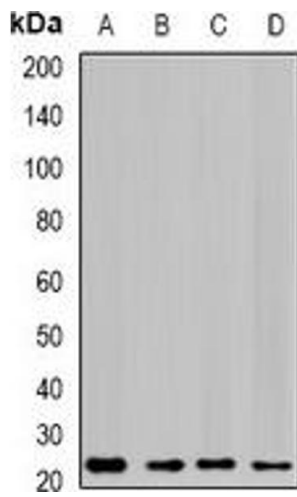
## Images

---



### Immunofluorescence

**Image 1.** Immunofluorescent analysis of GTL3 staining in A549 cells. Formalin-fixed cells were permeabilized with 0.1% Triton X-100 in TBS for 5-10 minutes and blocked with 3% BSA-PBS for 30 minutes at room temperature. Cells were probed with the primary antibody i



### Western Blotting

**Image 2.** Western blot analysis of GTL3 expression in SKOV3 (A), HepG2 (B), mouse liver (C), rat lung (D) whole cell lysates.