

Datasheet for ABIN7306954

**anti-FIP1L1 antibody**

3 Images

[Go to Product page](#)

## Overview

Quantity:	100 µL
Target:	FIP1L1
Reactivity:	Human, Mouse, Rat
Host:	Rabbit
Clonality:	Polyclonal
Conjugate:	This FIP1L1 antibody is un-conjugated
Application:	Western Blotting (WB), Immunohistochemistry (IHC), Immunofluorescence (IF), Immunochromatography (IC)

## Product Details

Immunogen:	Recombinant full length protein of human FIP1L1
Specificity:	Recognizes endogenous levels of FIP1L1 protein.
Characteristics:	Rabbit polyclonal antibody to FIP1L1
Purification:	The antibody was purified by immunogen affinity chromatography.

## Target Details

Target:	FIP1L1
Alternative Name:	FIP1L1 ( <a href="#">FIP1L1 Products</a> )
Background:	FIP1, RHE, Pre-mRNA 3'-end-processing factor FIP1, hFip1, FIP1-like 1 protein, Factor interacting with PAP, Rearranged in hypereosinophilia

## Target Details

Gene ID:	81608, 66899, 289582
UniProt:	<a href="#">Q6UN15</a> , <a href="#">Q9D824</a> , <a href="#">Q5U317</a>

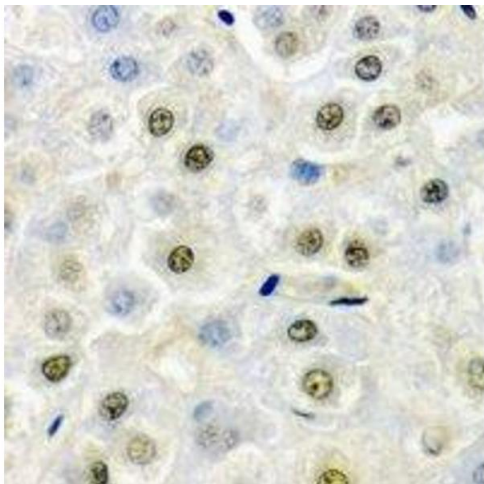
## Application Details

Application Notes:	WB (1:500 - 1:2000), IH (1:50 - 1:200), IF/IC (1:50 - 1:100)
Restrictions:	For Research Use only

## Handling

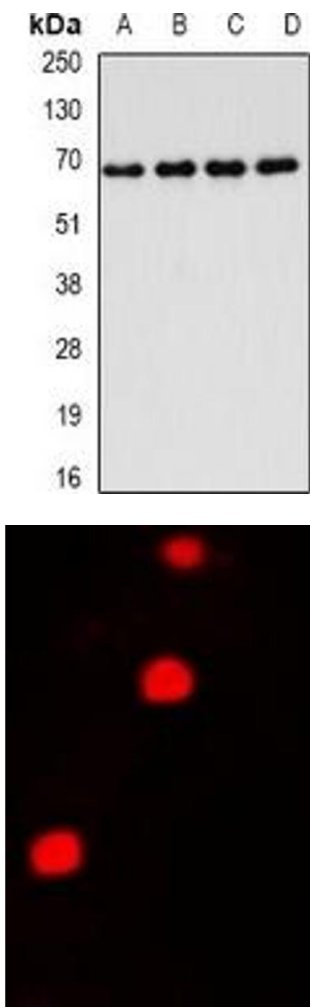
Format:	Liquid
Buffer:	Liquid in 0.42 % Potassium phosphate, 0.87 % Sodium chloride, pH 7.3, 30 % glycerol, and 0.01 % sodium azide.
Preservative:	Sodium azide
Precaution of Use:	This product contains Sodium azide: a POISONOUS AND HAZARDOUS SUBSTANCE which should be handled by trained staff only.
Storage:	-20 °C
Storage Comment:	Shipped at 4°C. Upon delivery aliquot and store at -20°C for one year. Avoid freeze/thaw cycles.
Expiry Date:	12 months

## Images



### Immunohistochemistry

**Image 1.** Immunohistochemical analysis of FIP1L1 staining in mouse liver formalin fixed paraffin embedded tissue section. The section was pre-treated using heat mediated antigen retrieval with sodium citrate buffer (pH 6.0). The section was then incubated with the



Western Blotting

**Image 2.** Western blot analysis of FIP1L1 expression in Jurkat (A), MCF7 (B), mouse thymus (C), rat lung (D) whole cell lysates.

Immunofluorescence

**Image 3.** Immunofluorescent analysis of FIP1L1 staining in A549 cells. Formalin-fixed cells were permeabilized with 0.1% Triton X-100 in TBS for 5-10 minutes and blocked with 3% BSA-PBS for 30 minutes at room temperature. Cells were probed with the primary antibody