

Datasheet for ABIN7306962

anti-KLF9 antibody**2** Images[Go to Product page](#)

Overview

Quantity:	100 µL
Target:	KLF9
Reactivity:	Human, Mouse, Rat
Host:	Rabbit
Clonality:	Polyclonal
Conjugate:	This KLF9 antibody is un-conjugated
Application:	Western Blotting (WB), Immunofluorescence (IF), Immunochromatography (IC)

Product Details

Immunogen:	Recombinant full length protein of human BTEB1
Specificity:	Recognizes endogenous levels of BTEB1 protein.
Characteristics:	Rabbit polyclonal antibody to BTEB1
Purification:	The antibody was purified by immunogen affinity chromatography.

Target Details

Target:	KLF9
Alternative Name:	BTEB1 (KLF9 Products)
Background:	BTEB, BTEB1, Krueppel-like factor 9, Basic transcription element-binding protein 1, BTE-binding protein 1, GC-box-binding protein 1, Transcription factor BTEB1
Gene ID:	687, 117560

Target Details

UniProt:	Q13886 , O35739 , Q01713
Pathways:	Intracellular Steroid Hormone Receptor Signaling Pathway

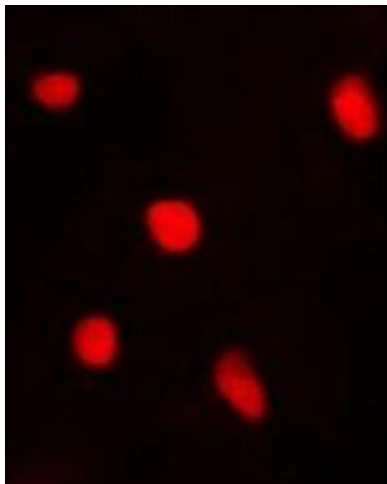
Application Details

Application Notes:	WB (1:500 - 1:2000), IF/IC (1:50 - 1:100)
Restrictions:	For Research Use only

Handling

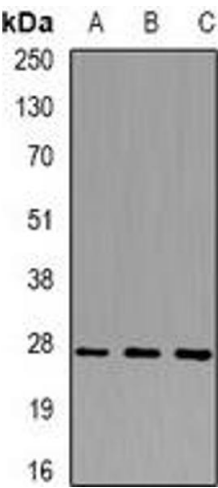
Format:	Liquid
Buffer:	Liquid in 0.42 % Potassium phosphate, 0.87 % Sodium chloride, pH 7.3, 30 % glycerol, and 0.01 % sodium azide.
Preservative:	Sodium azide
Precaution of Use:	This product contains Sodium azide: a POISONOUS AND HAZARDOUS SUBSTANCE which should be handled by trained staff only.
Storage:	-20 °C
Storage Comment:	Shipped at 4°C. Upon delivery aliquot and store at -20°C for one year. Avoid freeze/thaw cycles.
Expiry Date:	12 months

Images



Immunofluorescence

Image 1. Immunofluorescent analysis of BTEB1 staining in A549 cells. Formalin-fixed cells were permeabilized with 0.1% Triton X-100 in TBS for 5-10 minutes and blocked with 3% BSA-PBS for 30 minutes at room temperature. Cells were probed with the primary antibody



Western Blotting

Image 2. Western blot analysis of BTEB1 expression in mouse lung (A), mouse liver (B), rat brain (C) whole cell lysates.