

Datasheet for ABIN7306964

**anti-MCM10 antibody**

## 2 Images

[Go to Product page](#)

## Overview

Quantity:	100 µL
Target:	MCM10
Reactivity:	Human
Host:	Rabbit
Clonality:	Polyclonal
Conjugate:	This MCM10 antibody is un-conjugated
Application:	Western Blotting (WB), Immunofluorescence (IF), Immunochromatography (IC)

## Product Details

Immunogen:	Recombinant full length protein of human MCM10
Specificity:	Recognizes endogenous levels of MCM10 protein.
Characteristics:	Rabbit polyclonal antibody to MCM10
Purification:	The antibody was purified by immunogen affinity chromatography.

## Target Details

Target:	MCM10
Alternative Name:	MCM10 ( <a href="#">MCM10 Products</a> )
Background:	Protein MCM10 homolog, HsMCM10
Gene ID:	55388
UniProt:	<a href="#">Q7L590</a>

## Target Details

Pathways: [Mitotic G1-G1/S Phases, DNA Replication](#)

## Application Details

Application Notes: WB (1:500 - 1:2000), IF/IC (1:50 - 1:100)

Restrictions: For Research Use only

## Handling

Format: Liquid

Buffer: Liquid in 0.42 % Potassium phosphate, 0.87 % Sodium chloride, pH 7.3, 30 % glycerol, and 0.01 % sodium azide.

Preservative: Sodium azide

Precaution of Use: This product contains Sodium azide: a POISONOUS AND HAZARDOUS SUBSTANCE which should be handled by trained staff only.

Storage: -20 °C

Storage Comment: Shipped at 4°C. Upon delivery aliquot and store at -20°C for one year. Avoid freeze/thaw cycles.

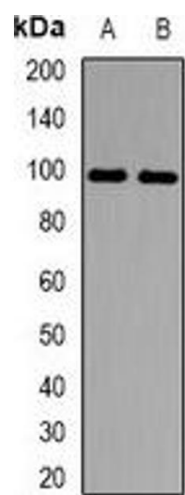
Expiry Date: 12 months

## Images



### Immunofluorescence

**Image 1.** Immunofluorescent analysis of MCM10 staining in A549 cells. Formalin-fixed cells were permeabilized with 0.1% Triton X-100 in TBS for 5-10 minutes and blocked with 3% BSA-PBS for 30 minutes at room temperature. Cells were probed with the primary antibody



Western Blotting

**Image 2.** Western blot analysis of MCM10 expression in MCF7 (A), mouse liver (B) whole cell lysates.