

Datasheet for ABIN7306972
anti-SMCHD1 antibody



[Go to Product page](#)

2 Images

Overview

Quantity:	100 µL
Target:	SMCHD1
Reactivity:	Mouse, Human, Rat
Host:	Rabbit
Clonality:	Polyclonal
Conjugate:	This SMCHD1 antibody is un-conjugated
Application:	Western Blotting (WB), Immunofluorescence (IF), Immunochromatography (IC)

Product Details

Immunogen:	Recombinant full length protein of human SMCHD1
Specificity:	Recognizes endogenous levels of SMCHD1 protein.
Characteristics:	Rabbit polyclonal antibody to SMCHD1
Purification:	The antibody was purified by immunogen affinity chromatography.

Target Details

Target:	SMCHD1
Alternative Name:	SMCHD1 (SMCHD1 Products)
Background:	KIAA0650, Structural maintenance of chromosomes flexible hinge domain-containing protein 1, SMC hinge domain-containing protein 1
Gene ID:	23347, 74355

Target Details

UniProt: [A6NHR9, Q6P5D8](#)

Application Details

Application Notes: WB (1:500 - 1:2000), IF/IC (1:50 - 1:100)

Restrictions: For Research Use only

Handling

Format: Liquid

Buffer: Liquid in 0.42 % Potassium phosphate, 0.87 % Sodium chloride, pH 7.3, 30 % glycerol, and 0.01 % sodium azide.

Preservative: Sodium azide

Precaution of Use: This product contains Sodium azide: a POISONOUS AND HAZARDOUS SUBSTANCE which should be handled by trained staff only.

Storage: -20 °C

Storage Comment: Shipped at 4°C. Upon delivery aliquot and store at -20°C for one year. Avoid freeze/thaw cycles.

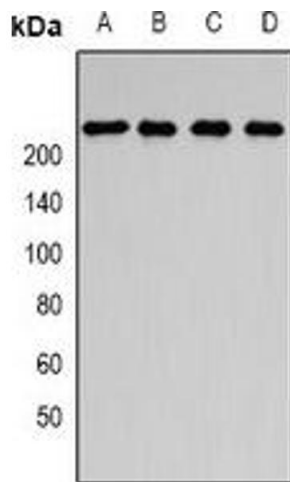
Expiry Date: 12 months

Images



Immunofluorescence

Image 1. Immunofluorescent analysis of SMCHD1 staining in MCF7 cells. Formalin-fixed cells were permeabilized with 0.1% Triton X-100 in TBS for 5-10 minutes and blocked with 3% BSA-PBS for 30 minutes at room temperature. Cells were probed with the primary antibody



Western Blotting

Image 2. Western blot analysis of SMCHD1 expression in SKOV3 (A), Jurkat (B), HepG2 (C), rat brain (D) whole cell lysates.