

Datasheet for ABIN7307000

anti-SETD8 antibody**2** Images[Go to Product page](#)

Overview

Quantity:	100 µL
Target:	SETD8
Reactivity:	Human, Rat
Host:	Rabbit
Clonality:	Polyclonal
Conjugate:	This SETD8 antibody is un-conjugated
Application:	Western Blotting (WB), Immunofluorescence (IF), Immunochromatography (IC)

Product Details

Immunogen:	Recombinant full length protein of human Pr-Set7
Specificity:	Recognizes endogenous levels of Pr-Set7 protein.
Characteristics:	Rabbit polyclonal antibody to Pr-Set7
Purification:	The antibody was purified by immunogen affinity chromatography.

Target Details

Target:	SETD8
Alternative Name:	Pr-Set7 (SETD8 Products)
Background:	KMT5A, PRSET7, SET07, SET8, N-lysine methyltransferase SETD8, H4-K20-HMTase SETD8, Histone-lysine N-methyltransferase SETD8, Lysine N-methyltransferase 5A, PR/SET domain-containing protein 07, PR-Set7, PR/SET07, SET domain-containing protein 8

Target Details

Gene ID: 387893

UniProt: [Q9NQR1](#)

Application Details

Application Notes: WB (1:500 - 1:2000), IF/IC (1:50 - 1:100)

Restrictions: For Research Use only

Handling

Format: Liquid

Buffer: Liquid in 0.42 % Potassium phosphate, 0.87 % Sodium chloride, pH 7.3, 30 % glycerol, and 0.01 % sodium azide.

Preservative: Sodium azide

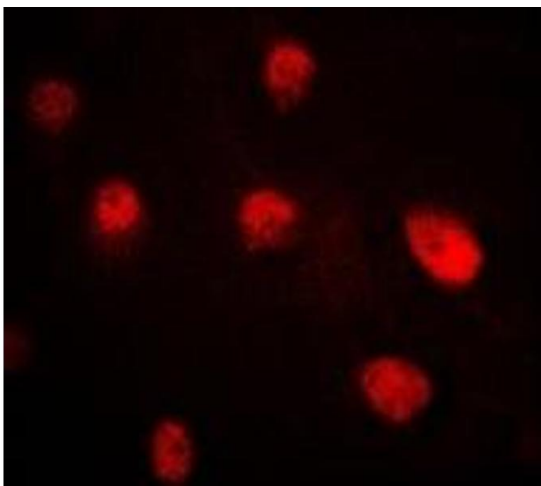
Precaution of Use: This product contains Sodium azide: a POISONOUS AND HAZARDOUS SUBSTANCE which should be handled by trained staff only.

Storage: -20 °C

Storage Comment: Shipped at 4°C. Upon delivery aliquot and store at -20°C for one year. Avoid freeze/thaw cycles.

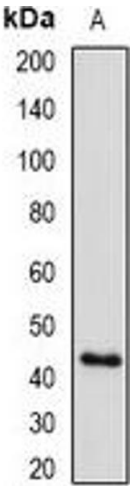
Expiry Date: 12 months

Images



Immunofluorescence

Image 1. Immunofluorescent analysis of Pr-Set7 staining in MCF7 cells. Formalin-fixed cells were permeabilized with 0.1% Triton X-100 in TBS for 5-10 minutes and blocked with 3% BSA-PBS for 30 minutes at room temperature. Cells were probed with the primary antibody



Western Blotting

Image 2. Western blot analysis of Pr-Set7 expression in HEK293T (A) whole cell lysates.