

Datasheet for ABIN7307032

anti-LHX6 antibody**2** Images[Go to Product page](#)

Overview

Quantity:	100 µL
Target:	LHX6
Reactivity:	Human, Mouse
Host:	Rabbit
Clonality:	Polyclonal
Conjugate:	This LHX6 antibody is un-conjugated
Application:	Western Blotting (WB), Immunofluorescence (IF), Immunochromatography (IC)

Product Details

Immunogen:	Recombinant full length protein of human LHX6
Specificity:	Recognizes endogenous levels of LHX6 protein.
Characteristics:	Rabbit polyclonal antibody to LHX6
Purification:	The antibody was purified by immunogen affinity chromatography.

Target Details

Target:	LHX6
Alternative Name:	LHX6 (LHX6 Products)
Background:	LHX6.1, LIM/homeobox protein Lhx6, LIM homeobox protein 6, LIM/homeobox protein Lhx6.1
Gene ID:	26468, 16874
UniProt:	Q9UPM6 , Q9R1R0

Application Details

Application Notes: WB (1:500 - 1:2000), IF/IC (1:50 - 1:200)

Restrictions: For Research Use only

Handling

Format: Liquid

Buffer: Liquid in 0.42 % Potassium phosphate, 0.87 % Sodium chloride, pH 7.3, 30 % glycerol, and 0.01 % sodium azide.

Preservative: Sodium azide

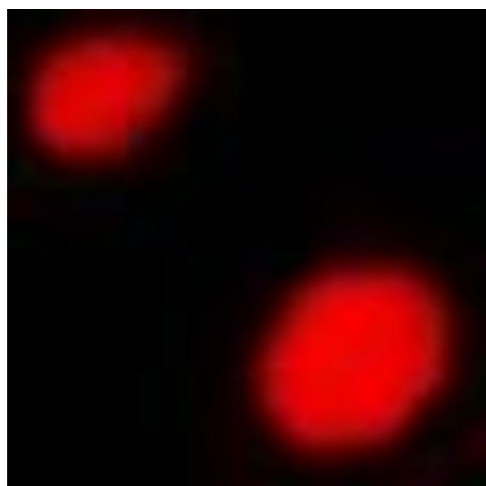
Precaution of Use: This product contains Sodium azide: a POISONOUS AND HAZARDOUS SUBSTANCE which should be handled by trained staff only.

Storage: -20 °C

Storage Comment: Shipped at 4°C. Upon delivery aliquot and store at -20°C for one year. Avoid freeze/thaw cycles.

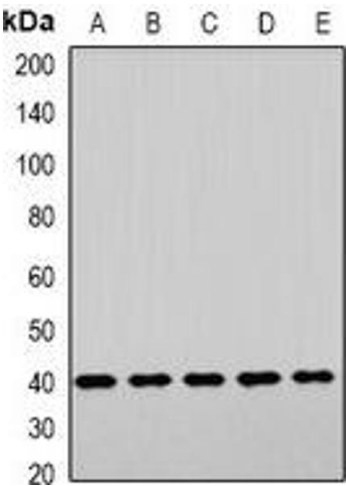
Expiry Date: 12 months

Images



Immunofluorescence

Image 1. Immunofluorescent analysis of LHX6 staining in A549 cells. Formalin-fixed cells were permeabilized with 0.1% Triton X-100 in TBS for 5-10 minutes and blocked with 3% BSA-PBS for 30 minutes at room temperature. Cells were probed with the primary antibody i



Western Blotting

Image 2. Western blot analysis of LHX6 expression in HepG2 (A), NIH3T3 (B), mouse brain (C), mouse liver (D), rat heart (E) whole cell lysates.