

Datasheet for ABIN7307078

anti-OSGEP antibody**2** Images[Go to Product page](#)

Overview

Quantity:	100 µL
Target:	OSGEP
Reactivity:	Human, Mouse, Rat
Host:	Rabbit
Clonality:	Polyclonal
Conjugate:	This OSGEP antibody is un-conjugated
Application:	Western Blotting (WB), Immunofluorescence (IF), Immunochromatography (IC)

Product Details

Immunogen:	Recombinant full length protein of human OSGEP
Specificity:	Recognizes endogenous levels of OSGEP protein.
Characteristics:	Rabbit polyclonal antibody to OSGEP
Purification:	The antibody was purified by immunogen affinity chromatography.

Target Details

Target:	OSGEP
Alternative Name:	OSGEP (OSGEP Products)
Background:	GCPL1, Probable tRNA N6-adenosine threonylcarbamoyltransferase, N6-L-threonylcarbamoyladenine synthase, t(6)A synthase, O-sialoglycoprotein endopeptidase, hOSGEP, t(6)A37 threonylcarbamoyladenine biosynthesis protein OSGEP, tRNA threonylcarbamoyladenine biosynthesis protein OSGEP

Target Details

Gene ID:	55644, 66246, 290028
UniProt:	Q9NPF4 , Q8BWU5 , Q9WVS2

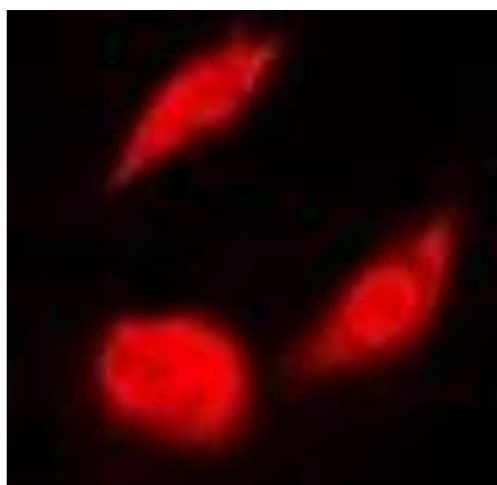
Application Details

Application Notes:	WB (1:500 - 1:2000), IF/IC (1:50 - 1:200)
Restrictions:	For Research Use only

Handling

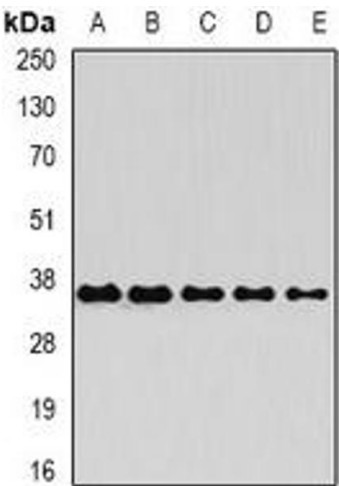
Format:	Liquid
Buffer:	Liquid in 0.42 % Potassium phosphate, 0.87 % Sodium chloride, pH 7.3, 30 % glycerol, and 0.01 % sodium azide.
Preservative:	Sodium azide
Precaution of Use:	This product contains Sodium azide: a POISONOUS AND HAZARDOUS SUBSTANCE which should be handled by trained staff only.
Storage:	-20 °C
Storage Comment:	Shipped at 4°C. Upon delivery aliquot and store at -20°C for one year. Avoid freeze/thaw cycles.
Expiry Date:	12 months

Images



Immunofluorescence

Image 1. Immunofluorescent analysis of OSGEP staining in A549 cells. Formalin-fixed cells were permeabilized with 0.1% Triton X-100 in TBS for 5-10 minutes and blocked with 3% BSA-PBS for 30 minutes at room temperature. Cells were probed with the primary antibody



Western Blotting

Image 2. Western blot analysis of OSGEP expression in Raji (A), Jurkat (B), mouse heart (C), mouse ovary (D), rat liver (E) whole cell lysates.