

Datasheet for ABIN7307148

anti-DPM1 antibody**1** Image[Go to Product page](#)

Overview

Quantity:	100 µL
Target:	DPM1
Reactivity:	Human, Mouse, Rat
Host:	Rabbit
Clonality:	Polyclonal
Conjugate:	This DPM1 antibody is un-conjugated
Application:	Western Blotting (WB)

Product Details

Immunogen:	Recombinant full length protein of human DPM1
Specificity:	Recognizes endogenous levels of DPM1 protein.
Characteristics:	Rabbit polyclonal antibody to DPM1
Purification:	The antibody was purified by immunogen affinity chromatography.

Target Details

Target:	DPM1
Alternative Name:	DPM1 (DPM1 Products)
Background:	Dolichol-phosphate mannosyltransferase subunit 1, Dolichol-phosphate mannose synthase subunit 1, DPM synthase subunit 1, Dolichyl-phosphate beta-D-mannosyltransferase subunit 1, Mannose-P-dolichol synthase subunit 1, MPD synthase subunit 1

Target Details

Gene ID:	8813, 13480
UniProt:	O60762 , O70152
Pathways:	Inositol Metabolic Process

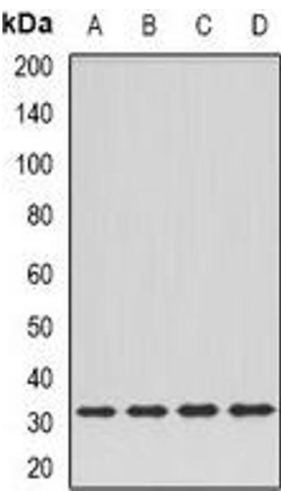
Application Details

Application Notes:	WB (1:500 - 1:2000)
Restrictions:	For Research Use only

Handling

Format:	Liquid
Buffer:	Liquid in 0.42 % Potassium phosphate, 0.87 % Sodium chloride, pH 7.3, 30 % glycerol, and 0.01 % sodium azide.
Preservative:	Sodium azide
Precaution of Use:	This product contains Sodium azide: a POISONOUS AND HAZARDOUS SUBSTANCE which should be handled by trained staff only.
Storage:	-20 °C
Storage Comment:	Shipped at 4°C. Upon delivery aliquot and store at -20°C for one year. Avoid freeze/thaw cycles.
Expiry Date:	12 months

Images



Western Blotting

Image 1. Western blot analysis of DPM1 expression in Hela (A), SKOV3 (B), mouse kidney (C), rat liver (D) whole cell lysates.