

Datasheet for ABIN7307306
anti-OSGEPL1 antibody

3 Images

[Go to Product page](#)

Overview

Quantity:	100 µL
Target:	OSGEPL1
Reactivity:	Human, Mouse
Host:	Rabbit
Clonality:	Polyclonal
Conjugate:	This OSGEPL1 antibody is un-conjugated
Application:	Western Blotting (WB), Immunohistochemistry (IHC), Immunofluorescence (IF), Immunochromatography (IC)

Product Details

Immunogen:	Recombinant full length protein of human OSGEPL1
Specificity:	Recognizes endogenous levels of OSGEPL1 protein.
Characteristics:	Rabbit polyclonal antibody to OSGEPL1
Purification:	The antibody was purified by immunogen affinity chromatography.

Target Details

Target:	OSGEPL1
Alternative Name:	OSGEPL1 (OSGEPL1 Products)
Background:	GCP1, Probable tRNA N6-adenosine threonylcarbamoyltransferase, mitochondrial, N6-L-threonylcarbamoyladenine synthase, t(6)A synthase, O-sialoglycoprotein endopeptidase-like protein 1, t(6)A37 threonylcarbamoyladenine biosynthesis protein OSGEPL1, tRNA

Target Details

	threonylcarbamoyladenosine biosynthesis protein OSGEPL1
Gene ID:	64172, 72085
UniProt:	Q9H4B0 , Q6PEB4

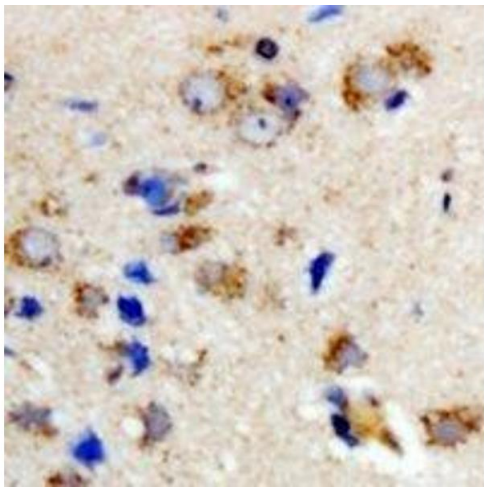
Application Details

Application Notes:	WB (1:500 - 1:2000), IH (1:50 - 1:200), IF/IC (1:50 - 1:100)
Restrictions:	For Research Use only

Handling

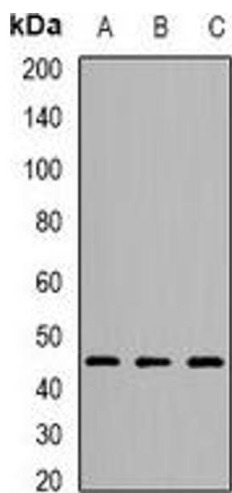
Format:	Liquid
Buffer:	Liquid in 0.42 % Potassium phosphate, 0.87 % Sodium chloride, pH 7.3, 30 % glycerol, and 0.01 % sodium azide.
Preservative:	Sodium azide
Precaution of Use:	This product contains Sodium azide: a POISONOUS AND HAZARDOUS SUBSTANCE which should be handled by trained staff only.
Storage:	-20 °C
Storage Comment:	Shipped at 4°C. Upon delivery aliquot and store at -20°C for one year. Avoid freeze/thaw cycles.
Expiry Date:	12 months

Images



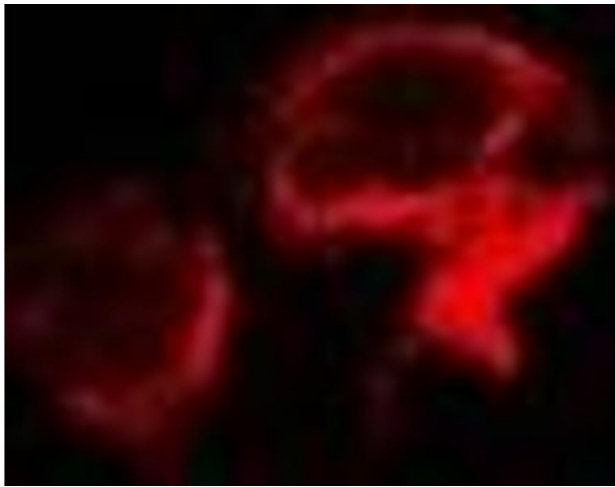
Immunohistochemistry

Image 1. Immunohistochemical analysis of OSGEPL1 staining in rat brain formalin fixed paraffin embedded tissue section. The section was pre-treated using heat mediated antigen retrieval with sodium citrate buffer (pH 6.0). The section was then incubated with the a



Western Blotting

Image 2. Western blot analysis of OSGEPL1 expression in mouse kidney (A), mouse liver (B), rat brain (C) whole cell lysates.



Immunofluorescence

Image 3. Immunofluorescent analysis of OSGEPL1 staining in A549 cells. Formalin-fixed cells were permeabilized with 0.1% Triton X-100 in TBS for 5-10 minutes and blocked with 3% BSA-PBS for 30 minutes at room temperature. Cells were probed with the primary antibody