

Datasheet for ABIN7307560

anti-Butyrylcholinesterase antibody**2** Images[Go to Product page](#)

Overview

Quantity:	100 µL
Target:	Butyrylcholinesterase (BCHE)
Reactivity:	Human, Mouse, Rat
Host:	Rabbit
Clonality:	Polyclonal
Conjugate:	This Butyrylcholinesterase antibody is un-conjugated
Application:	Western Blotting (WB), Immunofluorescence (IF), Immunochromatography (IC)

Product Details

Purpose:	Rabbit polyclonal antibody to Cholinesterase
Immunogen:	Recombinant full length protein of human Cholinesterase
Specificity:	Recognizes endogenous levels of Cholinesterase protein.
Characteristics:	Rabbit polyclonal antibody to Cholinesterase
Purification:	The antibody was purified by immunogen affinity chromatography.

Target Details

Target:	Butyrylcholinesterase (BCHE)
Alternative Name:	Cholinesterase (BCHE Products)
Background:	CHE1, Cholinesterase, Acylcholine acylhydrolase, Butyrylcholine esterase, Choline esterase II, Pseudocholinesterase

Target Details

Gene ID:	590, 12038
UniProt:	P06276, Q03311
Pathways:	Peptide Hormone Metabolism

Application Details

Application Notes:	WB (1:500 - 1:2000), IF/IC (1:50 - 1:200)
Restrictions:	For Research Use only

Handling

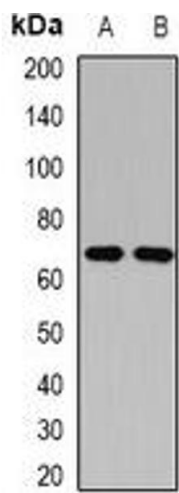
Format:	Liquid
Buffer:	Liquid in 0.42 % Potassium phosphate, 0.87 % Sodium chloride, pH 7.3, 30 % glycerol, and 0.01 % sodium azide.
Preservative:	Sodium azide
Precaution of Use:	This product contains Sodium azide: a POISONOUS AND HAZARDOUS SUBSTANCE which should be handled by trained staff only.
Storage:	-20 °C
Storage Comment:	Shipped at 4°C. Upon delivery aliquot and store at -20°C for one year. Avoid freeze/thaw cycles.
Expiry Date:	12 months

Images



Immunofluorescence

Image 1. Immunofluorescent analysis of Cholinesterase staining in U2OS cells. Formalin-fixed cells were permeabilized with 0.1% Triton X-100 in TBS for 5-10 minutes and blocked with 3% BSA-PBS for 30 minutes at room temperature. Cells were probed with the primary



Western Blotting

Image 2. Western blot analysis of Cholinesterase expression in HEK293T (A), SW620 (B) whole cell lysates.