

Datasheet for ABIN7307562
anti-BCL10 antibody



[Go to Product page](#)

2 Images

Overview

Quantity:	100 µL
Target:	BCL10
Reactivity:	Human, Mouse, Rat
Host:	Rabbit
Clonality:	Polyclonal
Conjugate:	This BCL10 antibody is un-conjugated
Application:	Western Blotting (WB), Immunofluorescence (IF), Immunochromatography (IC)

Product Details

Purpose:	Rabbit polyclonal antibody to BCL10
Immunogen:	Recombinant full length protein of human BCL10
Specificity:	Recognizes endogenous levels of BCL10 protein.
Characteristics:	Rabbit polyclonal antibody to BCL10
Purification:	The antibody was purified by immunogen affinity chromatography.

Target Details

Target:	BCL10
Alternative Name:	BCL10 (BCL10 Products)
Background:	CIPER, CLAP, B-cell lymphoma/leukemia 10, B-cell CLL/lymphoma 10, Bcl-10, CARD-containing molecule enhancing NF-kappa-B, CARD-like apoptotic protein, hCLAP, CED-3/ICH-1 prodomain

Target Details

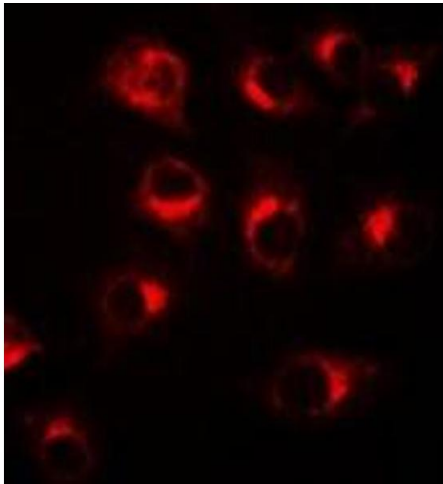
	homologous E10-like regulator, CIPER, Cellular homolog of vCARMEN, cCARMEN, Cellular-E10, c-E10, Mammalian CARD-containing adapter molecule E10, mE10
Gene ID:	8915, 12042, 83477
UniProt:	O95999 , Q9Z0H7 , Q9QYN5
Pathways:	TCR Signaling , Fc-epsilon Receptor Signaling Pathway , Activation of Innate immune Response , Positive Regulation of Immune Effector Process , Production of Molecular Mediator of Immune Response , Tube Formation , Positive Regulation of Endopeptidase Activity , BCR Signaling , Ubiquitin Proteasome Pathway , S100 Proteins

Application Details

Application Notes:	WB (1:500 - 1:2000), IF/IC (1:50 - 1:200)
Restrictions:	For Research Use only

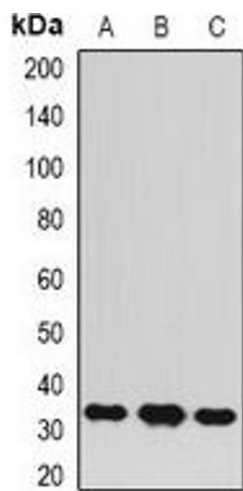
Handling

Format:	Liquid
Buffer:	Liquid in 0.42 % Potassium phosphate, 0.87 % Sodium chloride, pH 7.3, 30 % glycerol, and 0.01 % sodium azide.
Preservative:	Sodium azide
Precaution of Use:	This product contains Sodium azide: a POISONOUS AND HAZARDOUS SUBSTANCE which should be handled by trained staff only.
Storage:	-20 °C
Storage Comment:	Shipped at 4°C. Upon delivery aliquot and store at -20°C for one year. Avoid freeze/thaw cycles.
Expiry Date:	12 months



Immunofluorescence

Image 1. Immunofluorescent analysis of BCL10 staining in A549 cells. Formalin-fixed cells were permeabilized with 0.1% Triton X-100 in TBS for 5-10 minutes and blocked with 3% BSA-PBS for 30 minutes at room temperature. Cells were probed with the primary antibody



Western Blotting

Image 2. Western blot analysis of BCL10 expression in MCF7 (A), A549 (B), Jurkat (C) whole cell lysates.