

Datasheet for ABIN7307604
anti-Cyclin D2 antibody

3 Images



[Go to Product page](#)

Overview

| | |
|--------------|--|
| Quantity: | 100 µL |
| Target: | Cyclin D2 (CCND2) |
| Reactivity: | Human, Mouse, Rat |
| Host: | Rabbit |
| Clonality: | Polyclonal |
| Conjugate: | This Cyclin D2 antibody is un-conjugated |
| Application: | Western Blotting (WB), Immunohistochemistry (IHC), Immunofluorescence (IF), Immunochromatography (IC) |

Product Details

| | |
|------------------|---|
| Purpose: | Rabbit polyclonal antibody to Cyclin D2 |
| Immunogen: | Recombinant full length protein of human Cyclin D2 |
| Specificity: | Recognizes endogenous levels of Cyclin D2 protein. |
| Characteristics: | Rabbit polyclonal antibody to Cyclin D2 |
| Purification: | The antibody was purified by immunogen affinity chromatography. |

Target Details

| | |
|-------------------|--|
| Target: | Cyclin D2 (CCND2) |
| Alternative Name: | Cyclin D2 (CCND2 Products) |
| Background: | G1/S-specific cyclin-D2 |

Target Details

| | |
|-----------|--|
| Gene ID: | 894, 12444, 64033 |
| UniProt: | P30279 , P30280 , Q04827 |
| Pathways: | Cell Division Cycle , Mitotic G1-G1/S Phases |

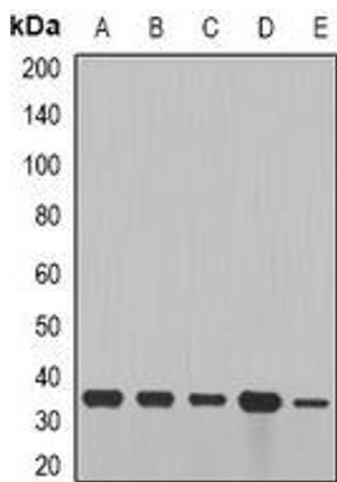
Application Details

| | |
|--------------------|--|
| Application Notes: | WB (1:500 - 1:2000), IH (1:50 - 1:200), IF/IC (1:50 - 1:200) |
| Restrictions: | For Research Use only |

Handling

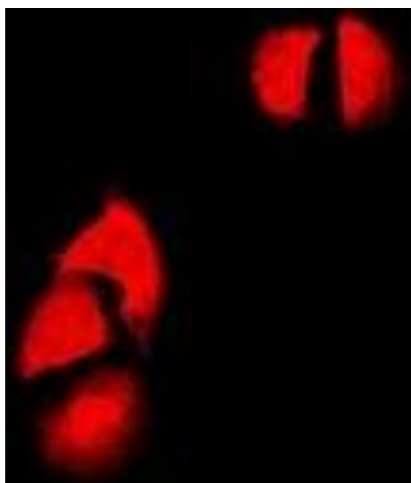
| | |
|--------------------|--|
| Format: | Liquid |
| Buffer: | Liquid in 0.42 % Potassium phosphate, 0.87 % Sodium chloride, pH 7.3, 30 % glycerol, and 0.01 % sodium azide. |
| Preservative: | Sodium azide |
| Precaution of Use: | This product contains Sodium azide: a POISONOUS AND HAZARDOUS SUBSTANCE which should be handled by trained staff only. |
| Storage: | -20 °C |
| Storage Comment: | Shipped at 4°C. Upon delivery aliquot and store at -20°C for one year. Avoid freeze/thaw cycles. |
| Expiry Date: | 12 months |

Images



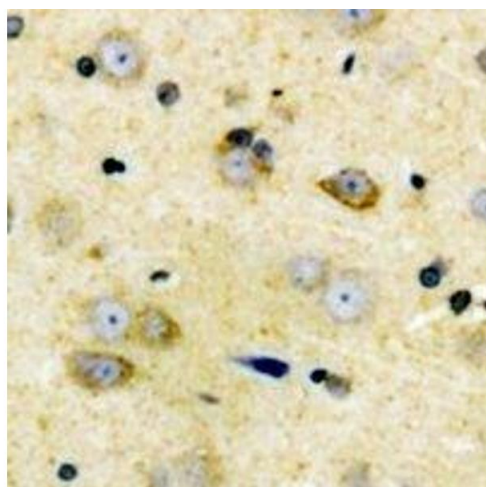
Western Blotting

Image 1. Western blot analysis of Cyclin D2 expression in SW480 (A), NIH3T3 (B), mouse brain (C), mouse lung (D), rat heart (E) whole cell lysates.



Immunofluorescence

Image 2. Immunofluorescent analysis of Cyclin D2 staining in SW480 cells. Formalin-fixed cells were permeabilized with 0.1% Triton X-100 in TBS for 5-10 minutes and blocked with 3% BSA-PBS for 30 minutes at room temperature. Cells were probed with the primary anti



Immunohistochemistry

Image 3. Immunohistochemical analysis of Cyclin D2 staining in human brain formalin fixed paraffin embedded tissue section. The section was pre-treated using heat mediated antigen retrieval with sodium citrate buffer (pH 6.0). The section was then incubated with t