

Datasheet for ABIN7307656

anti-CGA antibody

2 Images

[Go to Product page](#)

Overview

| | |
|--------------|---|
| Quantity: | 100 µL |
| Target: | CGA |
| Reactivity: | Human |
| Host: | Rabbit |
| Clonality: | Polyclonal |
| Conjugate: | This CGA antibody is un-conjugated |
| Application: | Western Blotting (WB), Immunofluorescence (IF), Immunochromatography (IC) |

Product Details

| | |
|------------------|---|
| Purpose: | Rabbit polyclonal antibody to CG alpha |
| Immunogen: | Recombinant full length protein of human CG alpha |
| Specificity: | Recognizes endogenous levels of CG alpha protein. |
| Characteristics: | Rabbit polyclonal antibody to CG alpha |
| Purification: | The antibody was purified by immunogen affinity chromatography. |

Target Details

| | |
|-------------------|--|
| Target: | CGA |
| Alternative Name: | CG alpha (CGA Products) |
| Background: | Glycoprotein hormones alpha chain, Anterior pituitary glycoprotein hormones common subunit alpha, Choriogonadotropin alpha chain, Chorionic gonadotrophin subunit alpha, CG-alpha, |

Target Details

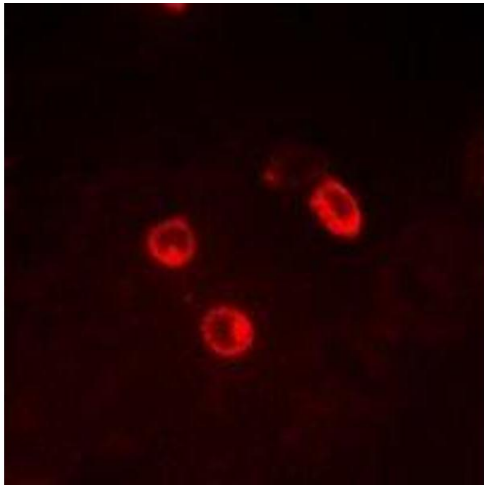
| | |
|-----------|---|
| | Follicle-stimulating hormone alpha chain, FSH-alpha, Follicle-stimulating hormone alpha chain, LSH-alpha, Lutropin alpha chain, Thyroid-stimulating hormone alpha chain, TSH-alpha, Thyrotropin alpha chain |
| Gene ID: | 1081 |
| UniProt: | P01215 |
| Pathways: | Metabolism of Steroid Hormones and Vitamin D , Thyroid Hormone Synthesis , Hormone Transport , Peptide Hormone Metabolism |

Application Details

| | |
|--------------------|---|
| Application Notes: | WB (1:500 - 1:2000), IF/IC (1:50 - 1:200) |
| Restrictions: | For Research Use only |

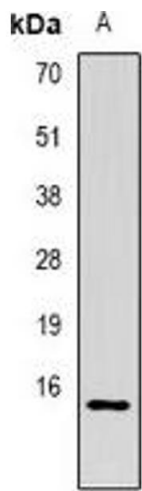
Handling

| | |
|--------------------|--|
| Format: | Liquid |
| Buffer: | Liquid in 0.42 % Potassium phosphate, 0.87 % Sodium chloride, pH 7.3, 30 % glycerol, and 0.01 % sodium azide. |
| Preservative: | Sodium azide |
| Precaution of Use: | This product contains Sodium azide: a POISONOUS AND HAZARDOUS SUBSTANCE which should be handled by trained staff only. |
| Storage: | -20 °C |
| Storage Comment: | Shipped at 4°C. Upon delivery aliquot and store at -20°C for one year. Avoid freeze/thaw cycles. |
| Expiry Date: | 12 months |



Immunofluorescence

Image 1. Immunofluorescent analysis of CG alpha staining in MCF7 cells. Formalin-fixed cells were permeabilized with 0.1% Triton X-100 in TBS for 5-10 minutes and blocked with 3% BSA-PBS for 30 minutes at room temperature. Cells were probed with the primary antibo



Western Blotting

Image 2. Western blot analysis of CG alpha expression in MCF7 (A) whole cell lysates.