

## Datasheet for ABIN7307666 **anti-CLEC12A antibody**



[Go to Product page](#)

### 1 Image

#### Overview

Quantity:	100 µL
Target:	CLEC12A
Reactivity:	Human, Mouse, Rat
Host:	Rabbit
Clonality:	Polyclonal
Conjugate:	This CLEC12A antibody is un-conjugated
Application:	Western Blotting (WB)

#### Product Details

Purpose:	Rabbit polyclonal antibody to CLEC12A
Immunogen:	Recombinant full length protein of human CLEC12A
Specificity:	Recognizes endogenous levels of CLEC12A protein.
Characteristics:	Rabbit polyclonal antibody to CLEC12A
Purification:	The antibody was purified by immunogen affinity chromatography.

#### Target Details

Target:	CLEC12A
Alternative Name:	CLEC12A ( <a href="#">CLEC12A Products</a> )
Background:	CLL1, DCAL2, MICL, C-type lectin domain family 12 member A, C-type lectin-like molecule 1, CLL-1, Dendritic cell-associated lectin 2, DCAL-2, Myeloid inhibitory C-type lectin-like receptor,

### Target Details

	MICL
Gene ID:	160364, 232413
UniProt:	<a href="#">Q5QGZ9</a> , <a href="#">Q504P2</a>

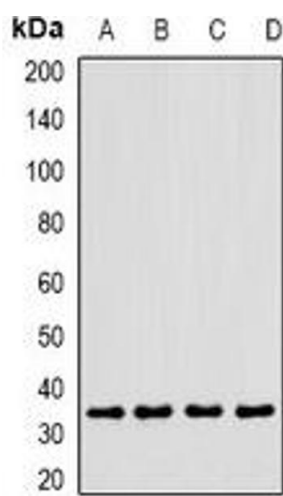
### Application Details

Application Notes:	WB (1:500 - 1:2000)
Restrictions:	For Research Use only

### Handling

Format:	Liquid
Buffer:	Liquid in 0.42 % Potassium phosphate, 0.87 % Sodium chloride, pH 7.3, 30 % glycerol, and 0.01 % sodium azide.
Preservative:	Sodium azide
Precaution of Use:	This product contains Sodium azide: a POISONOUS AND HAZARDOUS SUBSTANCE which should be handled by trained staff only.
Storage:	-20 °C
Storage Comment:	Shipped at 4°C. Upon delivery aliquot and store at -20°C for one year. Avoid freeze/thaw cycles.
Expiry Date:	12 months

### Images



#### Western Blotting

**Image 1.** Western blot analysis of CLEC12A expression in MCF7 (A), U937 (B), mouse heart (C), rat liver (D) whole cell lysates.