

Datasheet for ABIN7307716

**anti-CYP51A1 antibody****3** Images[Go to Product page](#)

## Overview

Quantity:	100 µL
Target:	CYP51A1
Reactivity:	Human, Mouse, Rat
Host:	Rabbit
Clonality:	Polyclonal
Conjugate:	This CYP51A1 antibody is un-conjugated
Application:	Western Blotting (WB), Immunohistochemistry (IHC), Immunofluorescence (IF), Immunochromatography (IC)

## Product Details

Purpose:	Rabbit polyclonal antibody to Cytochrome P450 51A1
Immunogen:	Recombinant full length protein of human Cytochrome P450 51A1
Specificity:	Recognizes endogenous levels of Cytochrome P450 51A1 protein.
Characteristics:	Rabbit polyclonal antibody to Cytochrome P450 51A1
Purification:	The antibody was purified by immunogen affinity chromatography.

## Target Details

Target:	CYP51A1
Alternative Name:	Cytochrome P450 51A1 ( <a href="#">CYP51A1 Products</a> )
Background:	CYP51, Lanosterol 14-alpha demethylase, LDM, CYPLI, Cytochrome P450 51A1, Cytochrome

## Target Details

P450-14DM, Cytochrome P45014DM, Cytochrome P450LI, Sterol 14-alpha demethylase

Gene ID: 1595, 13121, 25427

UniProt: [Q16850](#), [Q8K0C4](#), [Q64654](#)

## Application Details

Application Notes: WB (1:500 - 1:2000), IH (1:50 - 1:200), IF/IC (1:20 - 1:100)

Restrictions: For Research Use only

## Handling

Format: Liquid

Buffer: Liquid in 0.42 % Potassium phosphate, 0.87 % Sodium chloride, pH 7.3, 30 % glycerol, and 0.01 % sodium azide.

Preservative: Sodium azide

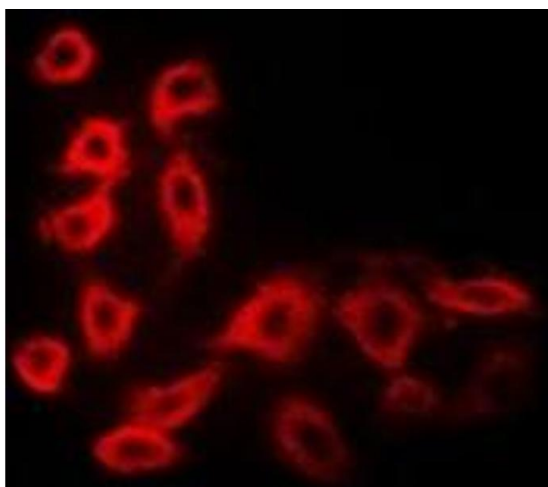
Precaution of Use: This product contains Sodium azide: a POISONOUS AND HAZARDOUS SUBSTANCE which should be handled by trained staff only.

Storage: -20 °C

Storage Comment: Shipped at 4°C. Upon delivery aliquot and store at -20°C for one year. Avoid freeze/thaw cycles.

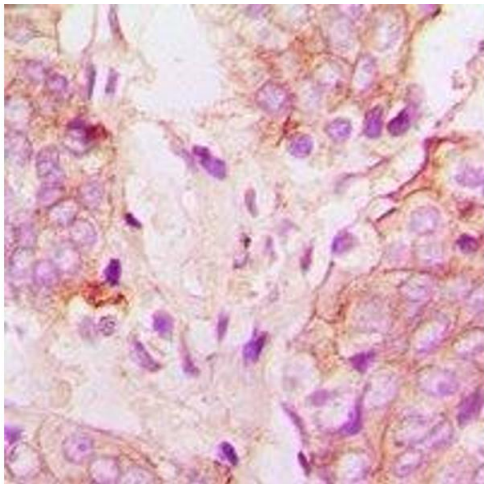
Expiry Date: 12 months

## Images



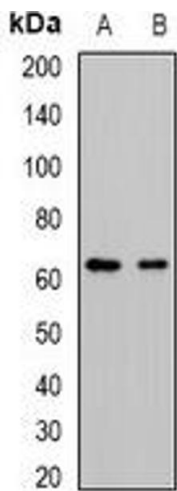
### Immunofluorescence

**Image 1.** Immunofluorescent analysis of Cytochrome P450 51A1 staining in MCF7 cells. Formalin-fixed cells were permeabilized with 0.1% Triton X-100 in TBS for 5-10 minutes and blocked with 3% BSA-PBS for 30 minutes at room temperature. Cells were probed with the pr



#### Immunohistochemistry

**Image 2.** Immunohistochemical analysis of Cytochrome P450 51A1 staining in human prostate cancer formalin fixed paraffin embedded tissue section. The section was pre-treated using heat mediated antigen retrieval with sodium citrate buffer (pH 6.0). The section was



#### Western Blotting

**Image 3.** Western blot analysis of Cytochrome P450 51A1 expression in mouse kidney (A), rat liver (B) whole cell lysates.