

Datasheet for ABIN7307730  
**anti-DIABLO antibody**



[Go to Product page](#)

2 Images

## Overview

Quantity:	100 µL
Target:	DIABLO
Reactivity:	Human, Mouse, Rat
Host:	Rabbit
Clonality:	Polyclonal
Conjugate:	This DIABLO antibody is un-conjugated
Application:	Western Blotting (WB), Immunofluorescence (IF), Immunochromatography (IC)

## Product Details

Purpose:	Rabbit polyclonal antibody to SMAC
Immunogen:	Recombinant full length protein of human SMAC
Specificity:	Recognizes endogenous levels of SMAC protein.
Characteristics:	Rabbit polyclonal antibody to SMAC
Purification:	The antibody was purified by immunogen affinity chromatography.

## Target Details

Target:	DIABLO
Alternative Name:	SMAC ( <a href="#">DIABLO Products</a> )
Background:	SMAC, Diablo homolog, mitochondrial, Direct IAP-binding protein with low pI, Second mitochondria-derived activator of caspase, Smac

## Target Details

Gene ID: 56616, 66593

UniProt: [Q9NR28, Q9JIQ3](#)

Pathways: [Apoptosis, Caspase Cascade in Apoptosis, Positive Regulation of Endopeptidase Activity](#)

## Application Details

Application Notes: WB (1:500 - 1:2000), IF/IC (1:50 - 1:200)

Restrictions: For Research Use only

## Handling

Format: Liquid

Buffer: Liquid in 0.42 % Potassium phosphate, 0.87 % Sodium chloride, pH 7.3, 30 % glycerol, and 0.01 % sodium azide.

Preservative: Sodium azide

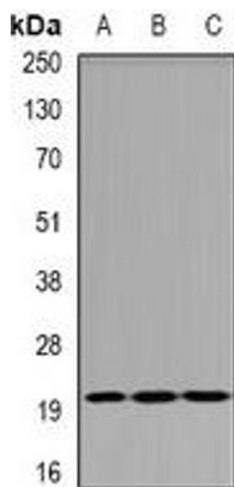
Precaution of Use: This product contains Sodium azide: a POISONOUS AND HAZARDOUS SUBSTANCE which should be handled by trained staff only.

Storage: -20 °C

Storage Comment: Shipped at 4°C. Upon delivery aliquot and store at -20°C for one year. Avoid freeze/thaw cycles.

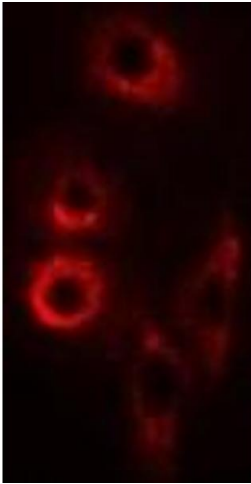
Expiry Date: 12 months

## Images



### Western Blotting

**Image 1.** Western blot analysis of SMAC expression in SW620 (A), BT474 (B), mouse spleen (C) whole cell lysates.



### Immunofluorescence

**Image 2.** Immunofluorescent analysis of SMAC staining in SW620 cells. Formalin-fixed cells were permeabilized with 0.1% Triton X-100 in TBS for 5-10 minutes and blocked with 3% BSA-PBS for 30 minutes at room temperature. Cells were probed with the primary antibody