

Datasheet for ABIN7307818
anti-Glutaredoxin 1 antibody

3 Images

[Go to Product page](#)

Overview

Quantity:	100 µL
Target:	Glutaredoxin 1 (GRX1)
Reactivity:	Human, Mouse, Rat
Host:	Rabbit
Clonality:	Polyclonal
Conjugate:	This Glutaredoxin 1 antibody is un-conjugated
Application:	Western Blotting (WB), Immunohistochemistry (IHC), Immunofluorescence (IF), Immunochromatography (IC)

Product Details

Purpose:	Rabbit polyclonal antibody to Glutaredoxin
Immunogen:	Recombinant full length protein of human Glutaredoxin
Specificity:	Recognizes endogenous levels of Glutaredoxin protein.
Characteristics:	Rabbit polyclonal antibody to Glutaredoxin
Purification:	The antibody was purified by immunogen affinity chromatography.

Target Details

Target:	Glutaredoxin 1 (GRX1)
Alternative Name:	Glutaredoxin (GRX1 Products)
Target Type:	Viral Protein

Target Details

Background: GRX, Glutaredoxin-1, Thioltransferase-1, TTase-1

Gene ID: 2745, 93692, 64045

UniProt: [P35754](#), [Q9QUH0](#), [Q9ESH6](#)

Pathways: [Cell RedoxHomeostasis](#)

Application Details

Application Notes: WB (1:500 - 1:2000), IH (1:50 - 1:200), IF/IC (1:50 - 1:200)

Restrictions: For Research Use only

Handling

Format: Liquid

Buffer: Liquid in 0.42 % Potassium phosphate, 0.87 % Sodium chloride, pH 7.3, 30 % glycerol, and 0.01 % sodium azide.

Preservative: Sodium azide

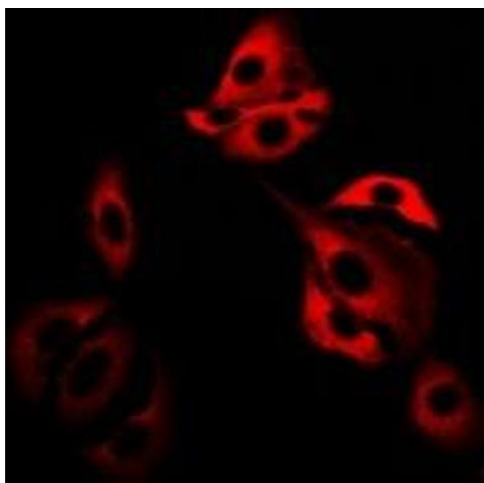
Precaution of Use: This product contains Sodium azide: a POISONOUS AND HAZARDOUS SUBSTANCE which should be handled by trained staff only.

Storage: -20 °C

Storage Comment: Shipped at 4°C. Upon delivery aliquot and store at -20°C for one year. Avoid freeze/thaw cycles.

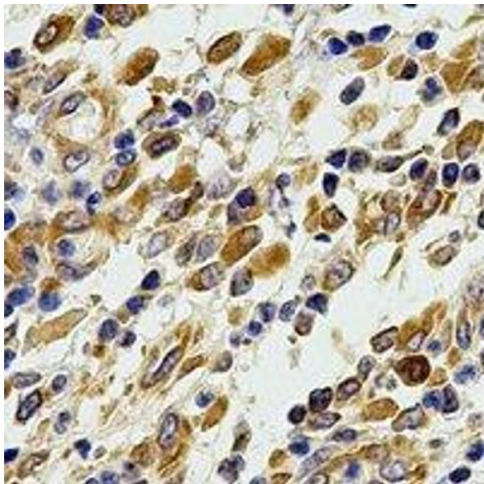
Expiry Date: 12 months

Images



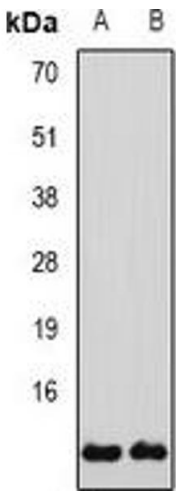
Immunofluorescence

Image 1. Immunofluorescent analysis of Glutaredoxin staining in SW480 cells. Formalin-fixed cells were permeabilized with 0.1% Triton X-100 in TBS for 5-10 minutes and blocked with 3% BSA-PBS for 30 minutes at room temperature. Cells were probed with the primary a



Immunohistochemistry

Image 2. Immunohistochemical analysis of Glutaredoxin staining in human stomach formalin fixed paraffin embedded tissue section. The section was pre-treated using heat mediated antigen retrieval with sodium citrate buffer (pH 6.0). The section was then incubated w



Western Blotting

Image 3. Western blot analysis of Glutaredoxin expression in SW480 (A), H460 (B) whole cell lysates.