

Datasheet for ABIN7307834  
**anti-GORASP1 antibody**

## 3 Images

[Go to Product page](#)

## Overview

Quantity:	100 µL
Target:	GORASP1
Reactivity:	Human
Host:	Rabbit
Clonality:	Polyclonal
Conjugate:	This GORASP1 antibody is un-conjugated
Application:	Western Blotting (WB), Immunohistochemistry (IHC), Immunofluorescence (IF), Immunochromatography (IC)

## Product Details

Purpose:	Rabbit polyclonal antibody to GRASP65
Immunogen:	Recombinant full length protein of human GRASP65
Specificity:	Recognizes endogenous levels of GRASP65 protein.
Characteristics:	Rabbit polyclonal antibody to GRASP65
Purification:	The antibody was purified by immunogen affinity chromatography.

## Target Details

Target:	GORASP1
Alternative Name:	GRASP65 ( <a href="#">GORASP1 Products</a> )
Background:	GOLPH5, GRASP65, Golgi reassembly-stacking protein 1, Golgi peripheral membrane protein

## Target Details

	p65, Golgi phosphoprotein 5, GOLPH5, Golgi reassembly-stacking protein of 65 kDa, GRASP65
Gene ID:	64689
UniProt:	<a href="#">Q9BQQ3</a>
Pathways:	<a href="#">SARS-CoV-2 Protein Interactome</a>

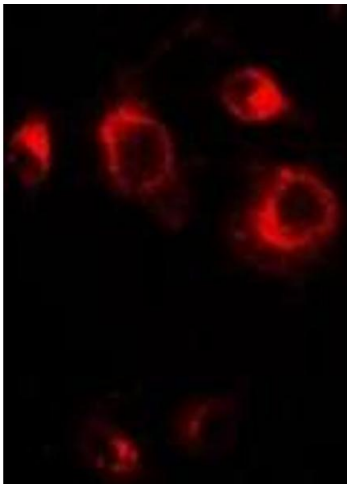
## Application Details

Application Notes:	WB (1:500 - 1:2000), IH (1:50 - 1:200), IF/IC (1:10 - 1:100)
Restrictions:	For Research Use only

## Handling

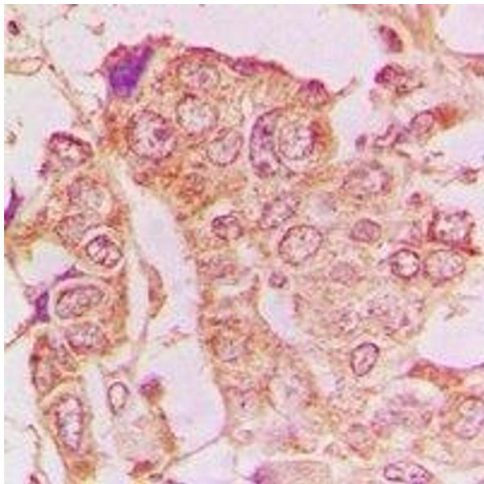
Format:	Liquid
Buffer:	Liquid in 0.42 % Potassium phosphate, 0.87 % Sodium chloride, pH 7.3, 30 % glycerol, and 0.01 % sodium azide.
Preservative:	Sodium azide
Precaution of Use:	This product contains Sodium azide: a POISONOUS AND HAZARDOUS SUBSTANCE which should be handled by trained staff only.
Storage:	-20 °C
Storage Comment:	Shipped at 4°C. Upon delivery aliquot and store at -20°C for one year. Avoid freeze/thaw cycles.
Expiry Date:	12 months

## Images



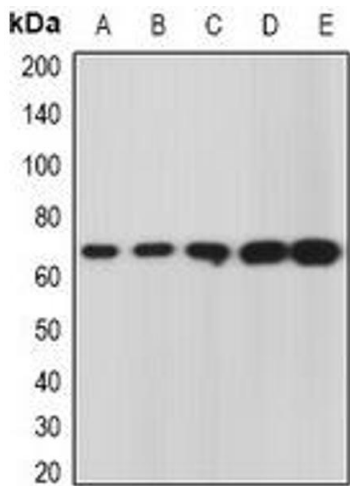
### Immunofluorescence

**Image 1.** Immunofluorescent analysis of GRASP65 staining in A549 cells. Formalin-fixed cells were permeabilized with 0.1% Triton X-100 in TBS for 5-10 minutes and blocked with 3% BSA-PBS for 30 minutes at room temperature. Cells were probed with the primary antibody



Immunohistochemistry

**Image 2.** Immunohistochemical analysis of GRASP65 staining in human breast cancer formalin fixed paraffin embedded tissue section. The section was pre-treated using heat mediated antigen retrieval with sodium citrate buffer (pH 6.0). The section was then incubated



Western Blotting

**Image 3.** Western blot analysis of GRASP65 expression in A549 (A), U937 (B), mouse kidney (C), mouse heart (D), rat liver (E) whole cell lysates.