

Datasheet for ABIN7307848

anti-Glutathione Synthetase antibody**3** Images[Go to Product page](#)

Overview

Quantity:	100 µL
Target:	Glutathione Synthetase (GSS)
Reactivity:	Human, Mouse, Rat
Host:	Rabbit
Clonality:	Polyclonal
Conjugate:	This Glutathione Synthetase antibody is un-conjugated
Application:	Western Blotting (WB), Immunohistochemistry (IHC), Immunofluorescence (IF), Immunochromatography (IC)

Product Details

Purpose:	Rabbit polyclonal antibody to Glutathione Synthetase
Immunogen:	Recombinant full length protein of human Glutathione Synthetase
Specificity:	Recognizes endogenous levels of Glutathione Synthetase protein.
Characteristics:	Rabbit polyclonal antibody to Glutathione Synthetase
Purification:	The antibody was purified by immunogen affinity chromatography.

Target Details

Target:	Glutathione Synthetase (GSS)
Alternative Name:	Glutathione Synthetase (GSS Products)
Background:	Glutathione synthetase, GSH synthetase, GSH-S, Glutathione synthase

Target Details

Gene ID:	2937, 14854, 25458
UniProt:	P48637 , P51855 , P46413
Pathways:	Warburg Effect

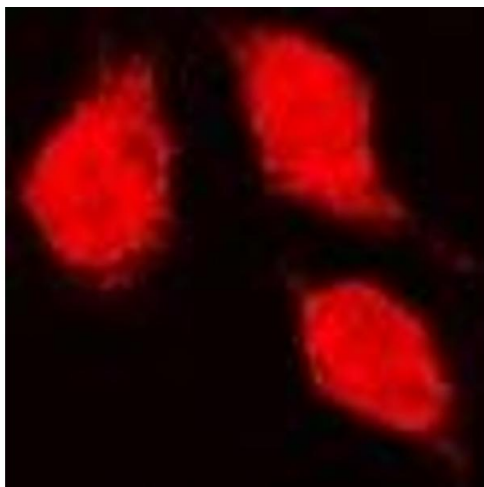
Application Details

Application Notes:	WB (1:500 - 1:2000), IH (1:50 - 1:200), IF/IC (1:50 - 1:200)
Restrictions:	For Research Use only

Handling

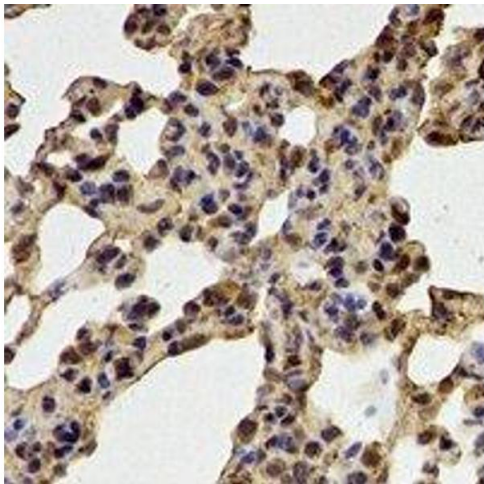
Format:	Liquid
Buffer:	Liquid in 0.42 % Potassium phosphate, 0.87 % Sodium chloride, pH 7.3, 30 % glycerol, and 0.01 % sodium azide.
Preservative:	Sodium azide
Precaution of Use:	This product contains Sodium azide: a POISONOUS AND HAZARDOUS SUBSTANCE which should be handled by trained staff only.
Storage:	-20 °C
Storage Comment:	Shipped at 4°C. Upon delivery aliquot and store at -20°C for one year. Avoid freeze/thaw cycles.
Expiry Date:	12 months

Images



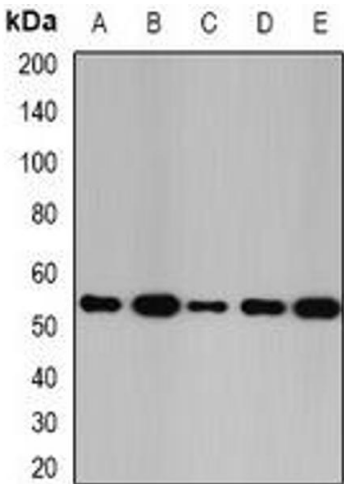
Immunofluorescence

Image 1. Immunofluorescent analysis of Glutathione Synthetase staining in K562 cells. Formalin-fixed cells were permeabilized with 0.1% Triton X-100 in TBS for 5-10 minutes and blocked with 3% BSA-PBS for 30 minutes at room temperature. Cells were probed with the



Immunohistochemistry

Image 2. Immunohistochemical analysis of Glutathione Synthetase staining in mouse lung formalin fixed paraffin embedded tissue section. The section was pre-treated using heat mediated antigen retrieval with sodium citrate buffer (pH 6.0). The section was then incu



Western Blotting

Image 3. Western blot analysis of Glutathione Synthetase expression in SW480 (A), K562 (B), Raji (C), mouse kidney (D), mouse liver (E) whole cell lysates.