

Datasheet for ABIN7307900

**anti-IFI16 antibody****2** Images[Go to Product page](#)

## Overview

Quantity:	100 µL
Target:	IFI16
Reactivity:	Human, Mouse
Host:	Rabbit
Clonality:	Polyclonal
Conjugate:	This IFI16 antibody is un-conjugated
Application:	Western Blotting (WB), Immunofluorescence (IF), Immunochromatography (IC)

## Product Details

Purpose:	Rabbit polyclonal antibody to IFI16
Immunogen:	Recombinant full length protein of human IFI16
Specificity:	Recognizes endogenous levels of IFI16 protein.
Characteristics:	Rabbit polyclonal antibody to IFI16
Purification:	The antibody was purified by immunogen affinity chromatography.

## Target Details

Target:	IFI16
Alternative Name:	IFI16 ( <a href="#">IFI16 Products</a> )
Background:	IFNGIP1, Gamma-interferon-inducible protein 16, Ifi-16, Interferon-inducible myeloid differentiation transcriptional activator

## Target Details

Gene ID:	3428
UniProt:	<a href="#">Q16666</a>
Pathways:	<a href="#">Activation of Innate immune Response</a> , <a href="#">Positive Regulation of Endopeptidase Activity</a> , <a href="#">Autophagy</a> , <a href="#">Inflammasome</a>

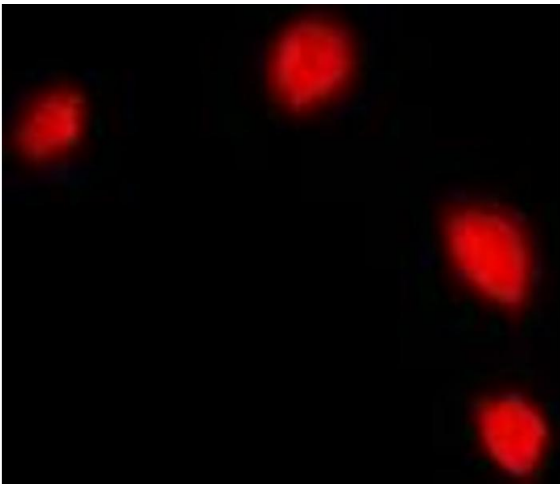
## Application Details

Application Notes:	WB (1:500 - 1:2000), IF/IC (1:50 - 1:200)
Restrictions:	For Research Use only

## Handling

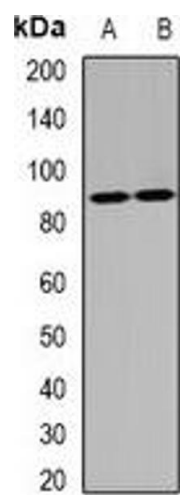
Format:	Liquid
Buffer:	Liquid in 0.42 % Potassium phosphate, 0.87 % Sodium chloride, pH 7.3, 30 % glycerol, and 0.01 % sodium azide.
Preservative:	Sodium azide
Precaution of Use:	This product contains Sodium azide: a POISONOUS AND HAZARDOUS SUBSTANCE which should be handled by trained staff only.
Storage:	-20 °C
Storage Comment:	Shipped at 4°C. Upon delivery aliquot and store at -20°C for one year. Avoid freeze/thaw cycles.
Expiry Date:	12 months

## Images



### Immunofluorescence

**Image 1.** Immunofluorescent analysis of IFI16 staining in U2OS cells. Formalin-fixed cells were permeabilized with 0.1% Triton X-100 in TBS for 5-10 minutes and blocked with 3% BSA-PBS for 30 minutes at room temperature. Cells were probed with the primary antibody



Western Blotting

**Image 2.** Western blot analysis of IFI16 expression in mouse spleen (A), mouse lung (B) whole cell lysates.