

Datasheet for ABIN7307970

anti-KPNA2 antibody**3** Images[Go to Product page](#)

Overview

| | |
|--------------|--|
| Quantity: | 100 µL |
| Target: | KPNA2 |
| Reactivity: | Human, Mouse, Rat |
| Host: | Rabbit |
| Clonality: | Polyclonal |
| Conjugate: | This KPNA2 antibody is un-conjugated |
| Application: | Western Blotting (WB), Immunohistochemistry (IHC), Immunofluorescence (IF), Immunochromatography (IC) |

Product Details

| | |
|------------------|---|
| Purpose: | Rabbit polyclonal antibody to Importin alpha 1 |
| Immunogen: | Recombinant full length protein of human Importin alpha 1 |
| Specificity: | Recognizes endogenous levels of Importin alpha 1 protein. |
| Characteristics: | Rabbit polyclonal antibody to Importin alpha 1 |
| Purification: | The antibody was purified by immunogen affinity chromatography. |

Target Details

| | |
|-------------------|---|
| Target: | KPNA2 |
| Alternative Name: | Importin alpha 1 (KPNA2 Products) |
| Background: | RCH2, Importin subunit alpha-5, Karyopherin subunit alpha-1, Nucleoprotein interactor 1, NPI-1, |

Target Details

| | |
|-----------|--|
| | RAG cohort protein 2, SRP1-beta |
| Gene ID: | 3836, 16646 |
| UniProt: | P52294 , Q60960 , P83953 |
| Pathways: | M Phase , Protein targeting to Nucleus |

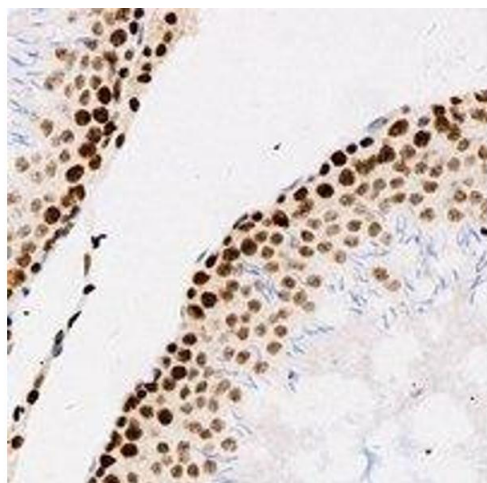
Application Details

| | |
|--------------------|--|
| Application Notes: | WB (1:500 - 1:2000), IH (1:50 - 1:200), IF/IC (1:50 - 1:200) |
| Restrictions: | For Research Use only |

Handling

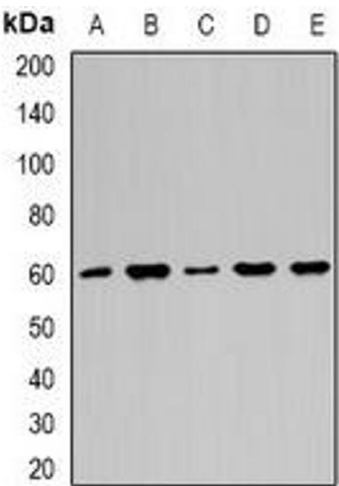
| | |
|--------------------|--|
| Format: | Liquid |
| Buffer: | Liquid in 0.42 % Potassium phosphate, 0.87 % Sodium chloride, pH 7.3, 30 % glycerol, and 0.01 % sodium azide. |
| Preservative: | Sodium azide |
| Precaution of Use: | This product contains Sodium azide: a POISONOUS AND HAZARDOUS SUBSTANCE which should be handled by trained staff only. |
| Storage: | -20 °C |
| Storage Comment: | Shipped at 4°C. Upon delivery aliquot and store at -20°C for one year. Avoid freeze/thaw cycles. |
| Expiry Date: | 12 months |

Images



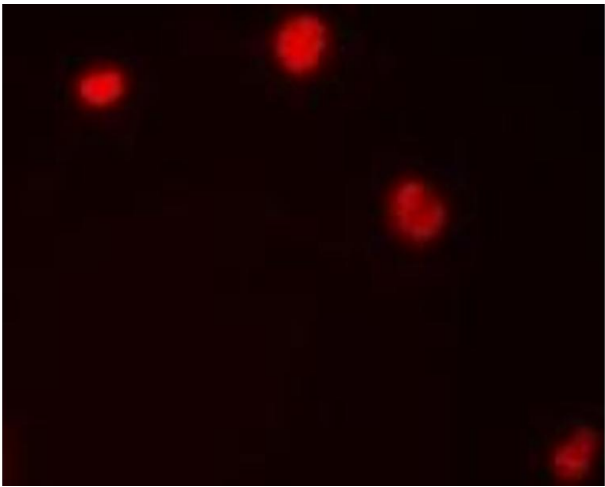
Immunohistochemistry

Image 1. Immunohistochemical analysis of Importin alpha 1 staining in human testis formalin fixed paraffin embedded tissue section. The section was pre-treated using heat mediated antigen retrieval with sodium citrate buffer (pH 6.0). The section was then incubate



Western Blotting

Image 2. Western blot analysis of Importin alpha 1 expression in HepG2 (A), Hela (B), A549 (C), mouse brain (D), mouse heart (E) whole cell lysates.



Immunofluorescence

Image 3. Immunofluorescent analysis of Importin alpha 1 staining in HepG2 cells. Formalin-fixed cells were permeabilized with 0.1% Triton X-100 in TBS for 5-10 minutes and blocked with 3% BSA-PBS for 30 minutes at room temperature. Cells were probed with the prima