



[Go to Product page](#)

Datasheet for ABIN730798

anti-ACE2 antibody (AA 601-700)

5 Images

1 Publication

Overview

Quantity:	100 µL
Target:	ACE2
Binding Specificity:	AA 601-700
Reactivity:	Human, Mouse, Rat
Host:	Rabbit
Clonality:	Polyclonal
Conjugate:	This ACE2 antibody is un-conjugated
Application:	Western Blotting (WB), ELISA, Flow Cytometry (FACS), Immunohistochemistry (Paraffin-embedded Sections) (IHC (p)), Immunocytochemistry (ICC), Immunofluorescence (Cultured Cells) (IF (cc)), Immunofluorescence (Paraffin-embedded Sections) (IF (p)), Immunohistochemistry (Frozen Sections) (IHC (fro))

Product Details

Immunogen:	KLH conjugated synthetic peptide derived from human ACE2
Isotype:	IgG
Cross-Reactivity:	Human, Mouse, Rat
Predicted Reactivity:	Dog, Sheep, Pig, Bat
Purification:	Purified by Protein A.

Target Details

Target:	ACE2
---------	------

Target Details

Alternative Name: [ACE2 \(ACE2 Products\)](#)

Background: Synonyms: ACEH, Angiotensin-converting enzyme 2, ACE-related carboxypeptidase, Angiotensin-converting enzyme homolog, Metalloprotease MPROT15, ACE2, UNQ868/PRO1885

Background: Carboxypeptidase which converts angiotensin I to angiotensin 1-9, a peptide of unknown function, and angiotensin II to angiotensin 1-7, a vasodilator. Also able to hydrolyze apelin-13 and dynorphin-13 with high efficiency. May be an important regulator of heart function. In case of human coronaviruses SARS and HCoV-NL63 infections, serve as functional receptor for the spike glycoprotein of both coronaviruses.

Gene ID: 59272

UniProt: [Q9BYF1](#)

Pathways: [ACE Inhibitor Pathway](#), [Peptide Hormone Metabolism](#), [Regulation of Systemic Arterial Blood Pressure by Hormones](#), [Feeding Behaviour](#)

Application Details

Application Notes: WB 1:300-5000
ELISA 1:500-1000
FCM 1:20-100
IHC-P 1:200-400
IHC-F 1:100-500
IF(IHC-P) 1:50-200
IF(IHC-F) 1:50-200
IF(ICC) 1:50-200
ICC 1:100-500

Restrictions: For Research Use only

Handling

Format: Liquid

Concentration: 1 µg/µL

Buffer: 0.01M TBS(pH 7.4) with 1 % BSA, 0.02 % Proclin300 and 50 % Glycerol.

Preservative: ProClin

Precaution of Use: This product contains ProClin: a POISONOUS AND HAZARDOUS SUBSTANCE, which should be

Handling

handled by trained staff only.

Storage: 4 °C,-20 °C

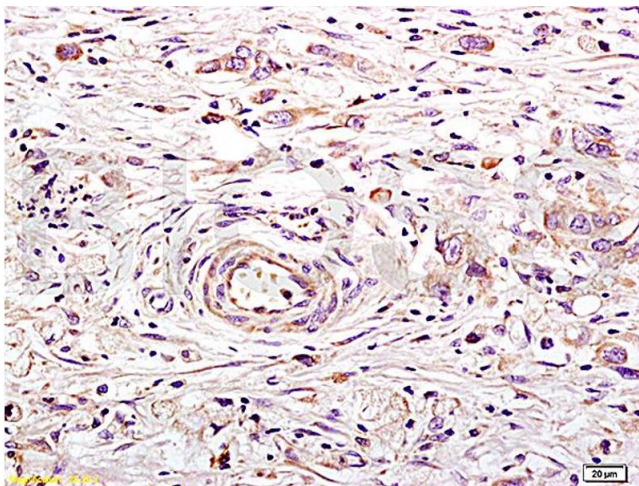
Storage Comment: Shipped at 4°C. Store at -20°C for one year. Avoid repeated freeze/thaw cycles.

Expiry Date: 12 months

Publications

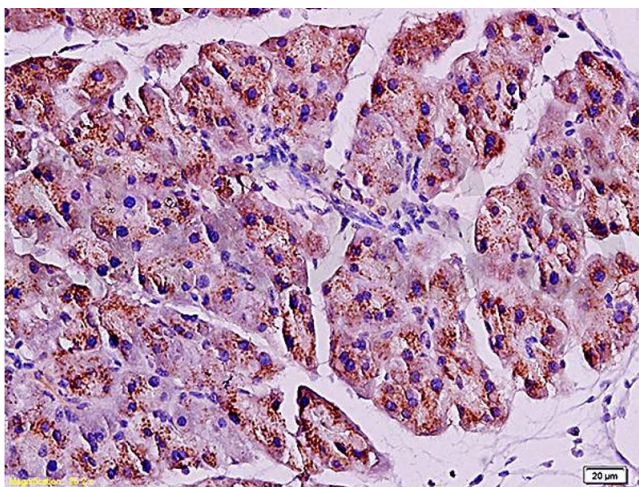
Product cited in: Raffai, Khang, Vanhoutte: "Angiotensin-(1-7) augments endothelium-dependent relaxations of porcine coronary arteries to bradykinin by inhibiting angiotensin-converting enzyme 1." in: **Journal of cardiovascular pharmacology**, Vol. 63, Issue 5, pp. 453-60, (2014) ([PubMed](#)).

Images



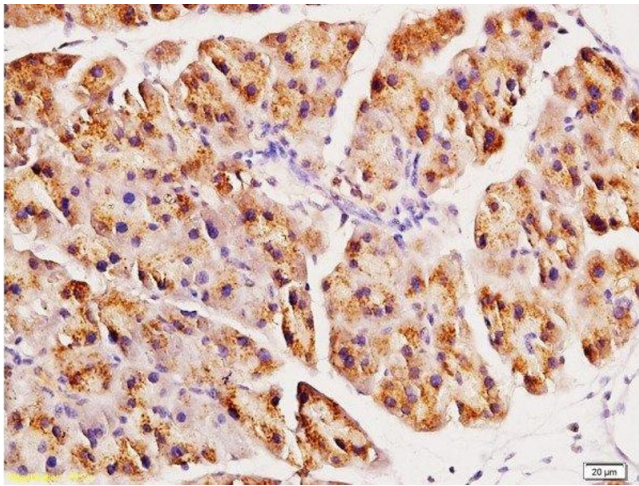
Immunohistochemistry

Image 1.



Immunohistochemistry

Image 2. Formalin-fixed and paraffin embedded rat pancreas tissue labeled with Anti-ACE2 Polyclonal Antibody, Unconjugated (ABIN730798) at 1:200, followed by conjugation to the secondary antibody and DAB staining



Immunohistochemistry (Paraffin-embedded Sections)

Image 3. Formalin-fixed and paraffin embedded rat pancreas tissue labeled with Anti-ACE2 Polyclonal Antibody, Unconjugated at 1:200, followed by conjugation to the secondary antibody and DAB staining

Please check the [product details page](#) for more images. Overall 5 images are available for ABIN730798.