



[Go to Product page](#)

Datasheet for ABIN7307998

anti-LC3B antibody

3 Images

Overview

Quantity:	100 µL
Target:	LC3B (MAP1LC3B)
Reactivity:	Human, Mouse, Rat
Host:	Rabbit
Clonality:	Polyclonal
Conjugate:	This LC3B antibody is un-conjugated
Application:	Western Blotting (WB), Immunohistochemistry (IHC), Immunofluorescence (IF), Immunochromatography (IC)

Product Details

Purpose:	Rabbit polyclonal antibody to LC3B
Immunogen:	KLH-conjugated synthetic peptide of human LC3B
Specificity:	Recognizes endogenous levels of LC3B protein.
Characteristics:	Rabbit polyclonal antibody to LC3B
Purification:	The antibody was purified by immunogen affinity chromatography.

Target Details

Target:	LC3B (MAP1LC3B)
Alternative Name:	LC3B (MAP1LC3B Products)
Background:	MAP1ALC3, Microtubule-associated proteins 1A/1B light chain 3B, Autophagy-related protein

Target Details

LC3 B, Autophagy-related ubiquitin-like modifier LC3 B, MAP1 light chain 3-like protein 2, MAP1A/MAP1B light chain 3 B, MAP1A/MAP1B LC3 B, Microtubule-associated protein 1 light chain 3 beta

Gene ID: 81631, 67443, 64862

UniProt: [Q9GZQ8](#), [Q9CQV6](#), [Q62625](#)

Pathways: [Autophagy](#)

Application Details

Application Notes: WB (1:500 - 1:2000), IH (1:50 - 1:200), IF/IC (1:50 - 1:200)

Restrictions: For Research Use only

Handling

Format: Liquid

Buffer: Liquid in 0.42 % Potassium phosphate, 0.87 % Sodium chloride, pH 7.3, 30 % glycerol, and 0.01 % sodium azide.

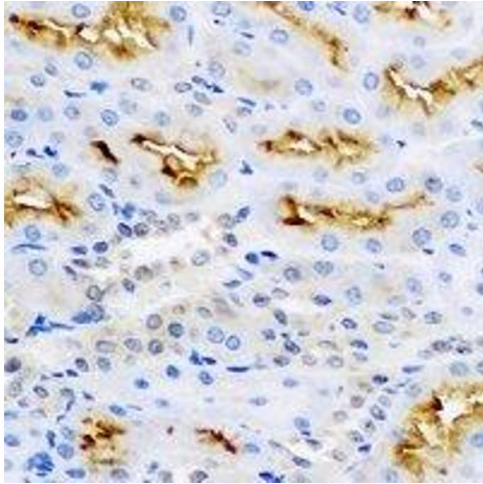
Preservative: Sodium azide

Precaution of Use: This product contains Sodium azide: a POISONOUS AND HAZARDOUS SUBSTANCE which should be handled by trained staff only.

Storage: -20 °C

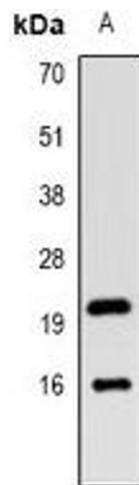
Storage Comment: Shipped at 4°C. Upon delivery aliquot and store at -20°C for one year. Avoid freeze/thaw cycles.

Expiry Date: 12 months



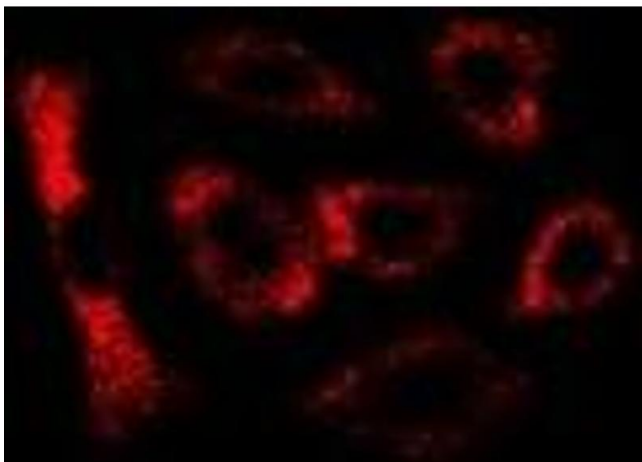
Immunohistochemistry

Image 1. Immunohistochemical analysis of LC3B staining in rat kidney formalin fixed paraffin embedded tissue section. The section was pre-treated using heat mediated antigen retrieval with sodium citrate buffer (pH 6.0). The section was then incubated with the ant



Western Blotting

Image 2. Western blot analysis of LC3B expression in mouse kidney (A) whole cell lysates.



Immunofluorescence

Image 3. Immunofluorescent analysis of LC3B staining in U2OS cells. Formalin-fixed cells were permeabilized with 0.1% Triton X-100 in TBS for 5-10 minutes and blocked with 3% BSA-PBS for 30 minutes at room temperature. Cells were probed with the primary antibody i