

Datasheet for ABIN7308014

anti-MBTPS1 antibody**3** Images[Go to Product page](#)

Overview

Quantity:	100 µL
Target:	MBTPS1
Reactivity:	Human, Mouse, Rat
Host:	Rabbit
Clonality:	Polyclonal
Conjugate:	This MBTPS1 antibody is un-conjugated
Application:	Western Blotting (WB), Immunohistochemistry (IHC), Immunofluorescence (IF), Immunochromatography (IC)

Product Details

Purpose:	Rabbit polyclonal antibody to MBTPS1
Immunogen:	Recombinant full length protein of human MBTPS1
Specificity:	Recognizes endogenous levels of MBTPS1 protein.
Characteristics:	Rabbit polyclonal antibody to MBTPS1
Purification:	The antibody was purified by immunogen affinity chromatography.

Target Details

Target:	MBTPS1
Alternative Name:	MBTPS1 (MBTPS1 Products)
Background:	KIAA0091, S1P, SKI1, Membrane-bound transcription factor site-1 protease, Endopeptidase

Target Details

	S1P, Subtilisin/kexin-isozyme 1, SKI-1
Gene ID:	8720, 56453, 89842
UniProt:	Q14703 , Q9WTZ2 , Q9WTZ3
Pathways:	ER-Nucleus Signaling

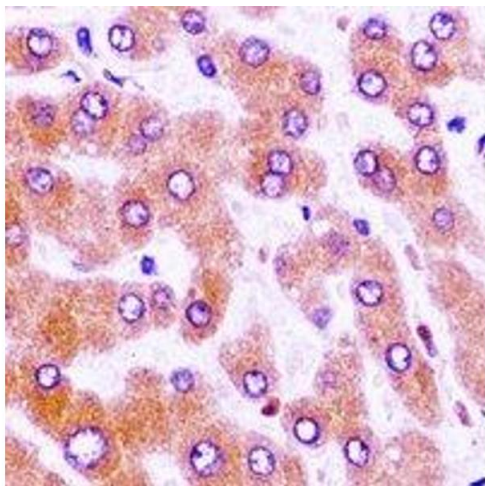
Application Details

Application Notes:	WB (1:500 - 1:2000), IH (1:50 - 1:200), IF/IC (1:50 - 1:100)
Restrictions:	For Research Use only

Handling

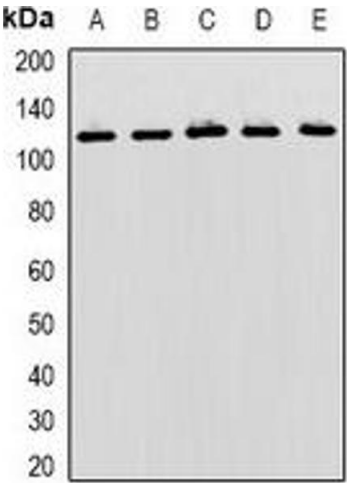
Format:	Liquid
Buffer:	Liquid in 0.42 % Potassium phosphate, 0.87 % Sodium chloride, pH 7.3, 30 % glycerol, and 0.01 % sodium azide.
Preservative:	Sodium azide
Precaution of Use:	This product contains Sodium azide: a POISONOUS AND HAZARDOUS SUBSTANCE which should be handled by trained staff only.
Storage:	-20 °C
Storage Comment:	Shipped at 4°C. Upon delivery aliquot and store at -20°C for one year. Avoid freeze/thaw cycles.
Expiry Date:	12 months

Images



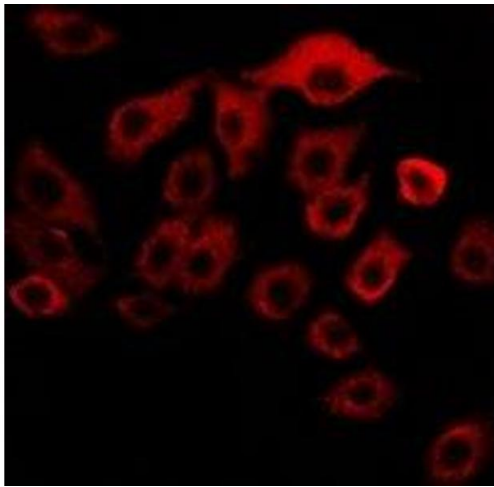
Immunohistochemistry

Image 1. Immunohistochemical analysis of MBTPS1 staining in human liver cancer formalin fixed paraffin embedded tissue section. The section was pre-treated using heat mediated antigen retrieval with sodium citrate buffer (pH 6.0). The section was then incubated wi



Western Blotting

Image 2. Western blot analysis of MBTPS1 expression in HeLa (A), SKOV3 (B), mouse liver (C), mouse kidney (D), rat brain (E) whole cell lysates.



Immunofluorescence

Image 3. Immunofluorescent analysis of MBTPS1 staining in SKOV3 cells. Formalin-fixed cells were permeabilized with 0.1% Triton X-100 in TBS for 5-10 minutes and blocked with 3% BSA-PBS for 30 minutes at room temperature. Cells were probed with the primary antibody