



Datasheet for ABIN7308018  
**anti-MCM3 antibody**



[Go to Product page](#)

3 Images

Overview

Quantity:	100 µL
Target:	MCM3
Reactivity:	Human, Mouse, Rat
Host:	Rabbit
Clonality:	Polyclonal
Conjugate:	This MCM3 antibody is un-conjugated
Application:	Western Blotting (WB), Immunohistochemistry (IHC), Immunofluorescence (IF), Immunochromatography (IC)

Product Details

Purpose:	Rabbit polyclonal antibody to MCM3
Immunogen:	Recombinant full length protein of human MCM3
Specificity:	Recognizes endogenous levels of MCM3 protein.
Characteristics:	Rabbit polyclonal antibody to MCM3
Purification:	The antibody was purified by immunogen affinity chromatography.

Target Details

Target:	MCM3
Alternative Name:	MCM3 ( <a href="#">MCM3 Products</a> )
Background:	DNA replication licensing factor MCM3, DNA polymerase alpha holoenzyme-associated protein

## Target Details

---

P1, P1-MCM3, RLF subunit beta, p102

Gene ID: 4172, 17215

UniProt: [P25205](#), [P25206](#)

Pathways: [DNA Damage Repair](#), [Mitotic G1-G1/S Phases](#), [DNA Replication](#), [Chromatin Binding](#), [Synthesis of DNA](#)

## Application Details

---

Application Notes: WB (1:500 - 1:2000), IH (1:50 - 1:200), IF/IC (1:50 - 1:200)

Restrictions: For Research Use only

## Handling

---

Format: Liquid

Buffer: Liquid in 0.42 % Potassium phosphate, 0.87 % Sodium chloride, pH 7.3, 30 % glycerol, and 0.01 % sodium azide.

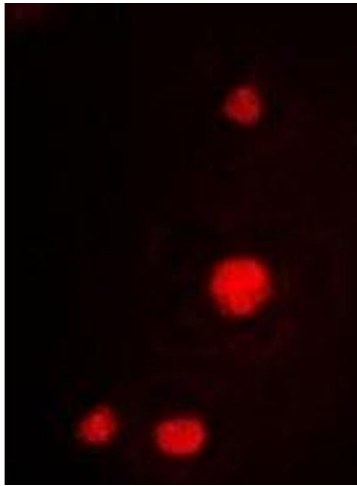
Preservative: Sodium azide

Precaution of Use: This product contains Sodium azide: a POISONOUS AND HAZARDOUS SUBSTANCE which should be handled by trained staff only.

Storage: -20 °C

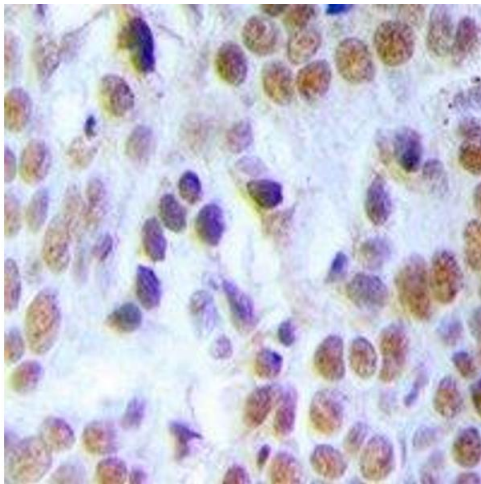
Storage Comment: Shipped at 4°C. Upon delivery aliquot and store at -20°C for one year. Avoid freeze/thaw cycles.

Expiry Date: 12 months



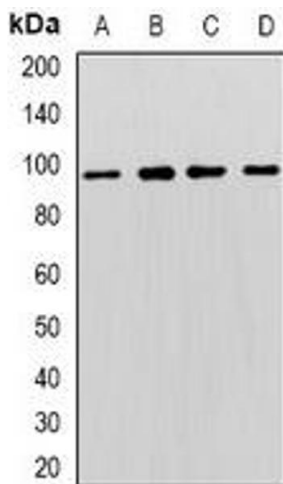
### Immunofluorescence

**Image 1.** Immunofluorescent analysis of MCM3 staining in K562 cells. Formalin-fixed cells were permeabilized with 0.1% Triton X-100 in TBS for 5-10 minutes and blocked with 3% BSA-PBS for 30 minutes at room temperature. Cells were probed with the primary antibody i



### Immunohistochemistry

**Image 2.** Immunohistochemical analysis of MCM3 staining in human breast cancer formalin fixed paraffin embedded tissue section. The section was pre-treated using heat mediated antigen retrieval with sodium citrate buffer (pH 6.0). The section was then incubated wit



### Western Blotting

**Image 3.** Western blot analysis of MCM3 expression in HeLa (A), K562 (B), NIH3T3 (C), PC12 (D) whole cell lysates.